

COMPANY PROFILE



"A" Grade

أي. دي. سي. أي.
A.D.C.i.

ALMANA
DESIGN CONSULTANTS INTERNATIONAL
المانع للتصاميم والاستشارات العالمية



Parks/Playground No. 6 at Al Wakrah - Scheme 1

A.D.C.i. (Almana Design Consultants International) is a professional Qatari multi-disciplinary practice (Architectural, Structural, Mechanical, Air Conditioning, Electrical and Public Health) owned by Abdulla Khalid Almana. The Company was established in 1974 and since then it has been engaged in a variety of heavy industrial and engineering projects in Qatar and the Gulf.

The Company is staffed with experienced and qualified architects and engineers at its well-equipped office in Doha. This facilitates direct communication and co-ordination with our clients and other parties.

All the major design and production drawings are executed in Doha and the quantity surveying, soil investigation and topographical surveys are usually carried out by local companies who function as our sub consultants. Our office is fully computerised and well-equipped to produce all kinds of designs and drawings using the latest Autocad system.

During the past decades ADCi has been involved with a diverse range of building projects in the Qatari market. This has made it quite familiar with the local

construction conditions, expertise, materials, equipment and specifications. ADCi has undertaken architectural and engineering services in Qatar, Saudi Arabia, Kuwait and the United Arab Emirates. This stands testimony to the fact that it has the capability and capacity to handle the design and construction of projects, in Doha and throughout the Gulf.

ADCi is committed to providing 'Total Quality Assurance' to all phases of its projects. This ensures that the highest desirable standards are always maintained by the Company.

ADCi's clientele include: H.H. the Emir of Qatar, the Qatar Armed Forces, Office of H.H. the Emir, Technical Office of H.H. the Heir Apparent, Building Affairs, Public Works Authority, Ministry of Education, Ministry of Municipal Affairs & Agriculture, Qatar Petroleum (QP), Qatar Fertiliser Company, Qatar Steel Company, Qatar National Cement Company, University of Qatar, Hamad Medical Corporation, Private Engineering Office (P.E.O), Qatar Shipping Company, Qatar National Hotels Company, Qatar Real Estate Investment Company, Qatar National Bank and many private Qatari companies and individuals.

Design Capacity and Experience

ADCi is well-equipped with Architectural, Structural/Civil, HVAC, Plumbing, Public Health and Electrical Engineering Consultants and has its own in-house interior design and landscaping departments. Since ADCi has a team of qualified and experienced architects and engineers, it is capable of providing a complete range of services, from initial design through to site supervision services.



Since its establishment, ADCi has gained vast experience in designing various Commercial Projects, Offices, Residential Complexes, Educational Projects, Landscaping/Parks, and other heavy and complex industrial engineering projects all around the State of Qatar.

ADCi has also developed a special expertise in producing designs for various medical & health care projects in Qatar. This Consultancy Practice, in association with its international Medical Planners, has successfully completed the planning, design and commissioning of various clinics and hospitals for the Government and the National Health Authority.

All the major design and production drawings, investigation and topographical surveys are usually carried out by local companies who function as our sub-consultants.



13-Storey Commercial/Office Complex at Umm Ghuwailina for Mr. Kamal Ali Saleh

Resources

Structural

Our team is familiar with the following software, which are well-known in the industry:

STAAD-PRO

ETABS

SAFE

PROKON

TEDDS

SAP 2000

Powerful programme based on the displacement method to provide straining actions through beams and membrane theories. This programme is usually more useful when the structure is complicated and cannot be solved by any of the programmes indicated below. It also generates coloured contour charts and the animation of deformed shapes due to static or seismic loads.

STAAD –III

Fully integrated programme for the analysis and design of structures according to BS 5950.

Space Frame

Provides straining actions for intersecting frames like panelled frames.

Space Trusses

Provides the natural forces in truss members, especially for towers and space trusses covering vast hall areas.

C-Beams

Powerful and fast programme for the analysis of continuous beams, generating drawings and reports for load, shear F.D. and bending M.D.

Electrical

Lighting

Philips Calculux R 5.0

DiaLux ver. 4.3

Siemens – Silicht 4.0

ABB-CEAG CGS-Lite

BEGA – PEX/PIN

LUX VISION, SANVIAL

Switchgear

ABB-DOCWin

Cables

ABB-DOCWin

Merlin Gerin – Ecodial – 2

Circuit Analysis

ABB-DOCWin

Lightning Protection

Heavacomp

Fire Alarm Sounders

Heavacomp

Emergency Lighting

Heavacomp

CCTV

Philips

Mechanical

CYMAP complete building services suite incorporating heating/ventilation, pipework, lighting and electrical.

Carrier heating & cooling load calculations of various systems (hourly analysis); air duct design, piping design (pipe sizing & head calculation), energy efficiency analysis.

Computer Aided Drafting

The Company operates a CAD system which outputs to the HP Designjet Plotters, allowing fully integrated drawing productions of up to A0 width. The system also has a 3-D modelling capability and a graphics linked database.

Project Execution Philosophy

Method of Performing Work

Generally, ADCi will execute the Professional Services Contract in accordance with the contract description and briefing requirements as stated in the Invitation to Tender issued by the client.

ADCi will develop the briefing instructions through reviews with the client and the current operational policies related to the requirements of the designs. These designs and user requirements are carefully studied and incorporated within the design development presentation.

The critical tasks, including the preparation of the contract drawings and documents, are assessed and then developed by the architects and engineers of ADCi within the prescribed programme of works.

This input is developed through the following agreed stages:

- Sketch Stage
- Preliminary Design Stage
- Detailed Design Stage

It will be accompanied by all reports and reviews required by the client.

The following factors are taken into account in order to achieve the objectives:

- Consideration for a range of architectural design variations
- Functional relationship of interdependent areas, while appreciating the specialised requirements of the culture.
- Appropriate space standards conducive to such a distinctive architecture.
- A design utilising adequate space standards and providing visual and auditory environments, creating suitable service conditions.
- Provisions for high wear and standards of hygiene, produced by selected specifications of appropriate materials.
- The finishings considered are conducive to such structures.
- Planning consideration is given to the social, cultural and general ethnical conditions prevailing in an Islamic country.
- Emphasis is given to circular patterns required to achieve the efficiency of use without any compromise on the space function.
- Security monitoring as necessary.
- General compliance with all relevant status, international standards, codes of practice, regulations and developed briefing requirements.
- Any general guidance notes which are considered should not inhibit the particular design solution.

All this information is developed according to the reinforced design philosophy of the client and design team as well as the basic criteria and specifications required for the logical development of a functionally appropriate design solution that is beneficial to the client/user.

As these engineering services can consume a significant proportion of the capital cost of a project, the design considerations must ensure:

- Economic design that is relative to functional requirements and appropriate standards.
- Economic appraisal of specifications and quality of materials.
- Access to plant and equipment avoiding disruption of general operations and building usage.
- Inspection and maintenance; replacement of elements.
- Energy management facilities; conservation of power.
- Easy staff operations; protection from unauthorised operations.
- Safety factors.

The effective areas are based on the appropriate and recommended area allowances per person.

The physical standards regarding emergency escape and risk evaluation factors are completely studied. Fire detection and alarm systems and appliances are duly incorporated to ensure full compliance with BS Standards, latest local Civil Defence Code, NEPA and relevant Codes of Practice.



Commercial Complex at Al Sadd for
Sheikh Saoud Bin Abdulrehman Bin Khalifa Al-Thani

Quality Assurance/Quality Control

ADCi's has developed an in-house Quality Assurance and Control System which conforms to the client's quality requirements.

Q.A./Q.C. Systems - Office Policy

A.D.C.i. (Almana Design Consultants International) has the expertise and experience to document and maintain an effective quality system in line with the standards of BS 5750 and ISO 9000. This proves that we are totally committed to quality. ADCi has its own quality system, adapted from the norms of the BS & ISO regulations and the professional experience it has gathered over the past decades. This involves a well-organised and structured management headed by our Technical Director, who is also the Engineer-in-Charge of the Company. The Technical Director appoints the QA/QC Manager whose job is to co-ordinate and monitor the quality system and ensure that prompt and effective action is taken to meet the precise standards. He is also responsible for the review of the quality system by establishing a schedule for review, adjust them based on results and past experience, suggest improvements, reveal defects and check the effectiveness of the management at all levels in order to ensure that the desired results are achieved, in conformity with the client's project quality monitoring procedures.

In order to control the time expended and the expenses incurred ADCi has its own internal audit system, which highlights the following:

- 1) Method for improvement.
- 2) Understanding the system shortcomings.
- 3) Strategies.
- 4) Resourcing for the jobs.
- 5) Recommendations/action plans based on findings.

The system of preparation, checking and approval of our design documents comprises of:

- 1) The provision of the scheme to be developed.
- 2) The provision of the valid codes of design practice and procedures.
- 3) Investigation of the latest trends/techniques.
- 4) Adequacy of the drawings and specifications to be produced.
- 5) Avoidance of irrational limits.
- 6) Statutory requirements.
- 7) Design review procedures.
- 8) Audit of the entire system.
- 9) Approvals.
- 10) Analysis of comments from the client.
- 11) Corrective action.
- 12) Control of Revision.
- 13) Recording subsequent actions.
- 14) Removal of superseded documents.

With regard to the system for verification of internal procedure, ADCi has their own codes for office procedure with the QA/QC Manager as the final authority to assess the results of the internal quality audit. Each member of the staff who is assigned to a project is briefed in detail about his responsibility, reporting procedure and methods. These reports are periodically

amended according to the updated techniques and project requirements. Constant monitoring of progress ensures that the design output meets the design input requirements and these are documented in accordance with BS 5750 which ensures a smooth transition from initial concept design through to final detailed design. Written procedures in the office detail how all functions are to be controlled and reported, especially about who is in control, and what is to be controlled in the event of design modifications. To this end, various charts and programmes are used by ADCi with regular discussions with the staff who will be operating within them.



Commercial/Residential Tower at Lusail for
Mr. Jassem Al Mansouri

A.D.C.i

(Almana Design Consultants International)

Consulting Architects, Engineers & Project Management

Near Midmac Roundabout, West Corner, Centre Building, Office Nos. 5 & 6
P.O. Box 3379, Doha, State of Qatar, Tel +974 4699033/44, Fax +974 4699022
E-mail: adci@qatar.net.qa

أي. دي. سي. أي.

المناصع للتصاميم والاستشارات العالمية

استشارات إنشائية وهندسية وإدارة المشاريع

قرب دوار مدمام، الركن الغربي، المبنى المركزي، المكاتب 5 و 6

ص.ب. 3379، الدوحة، دولة قطر. هاتف: +974 4699033/44، فاكس: +974 4699022

البريد الإلكتروني: adci@qatar.net.qa

LIST OF KEY PROJECTS COMPLETED



Location and Description of the Project

Description : The project is a commercial building with 2B+G+M+7 configuration. The buildup area of the project is approximately 50,000 sq.m. Two underground basements are used for car parks, while the ground floor and mezzanine floor are for show rooms and the rest of the floors are for office purpose

Location : Airport Road

Project Works

Description : The project comprised of complete Design and preparation of Tender documents and obtaining all Local Authorities approvals i.e. Architectural, Planning, Kahramaa, Water, Drainage, Ooredoo & QCDD.

Nature of Involvement

Specialist Consultants : **Architectural Design (E-Square Architects – Lebanon)**

Sub-Consultants : **Almana Design Consultants International (MEP Design Only)**

Complete design of MEP Services which includes HVAC, Fire Protection, Plumbing, Drainage, Electrical and ELV Systems.

Review of complete design of Architectural layouts to make sure that the design adheres to Local and International Codes and Standards including obtaining all Local Authorities approvals.

DESIGN OF COMMERCIAL BUILDING AT AIRPORT ROAD

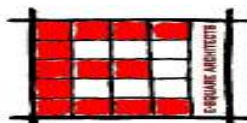
Type of Services: ✓ Design - Supervision - Project Management

Value of Contract : QR 285 million

Start and Completion Dates

Start Date : February 2012

Completion Date : January 2013



ALMANA DESIGN CONSULTANTS INTERNATIONAL | COMPANY PROFILE



TWIN TOWERS AT MARINA DISTRICT, LUSAIL

Type of Services: ✓ Design - Supervision - Project Management

Location and Description of the Project

Description : The building is an office building with adjoining two towers . Each tower has 32 floors with 3 levels of common basements for car parks. The buildup area is approximately 98,500 sq.m. The building is designed for QSAS rating two (2) stars.

Location : Lusail

Project Works

Description : The project comprised of complete Design and preparation of Tender documents and obtaining all Local Authorities approvals i.e. Architectural, Planning, Kahramaa, Water, Drainage, Ooredoo & QCDD.

Nature of Involvement

Specialist Consultants : **Architectural Design (E-Square Architects – Lebanon)**

Sub-Consultants : **Almana Design Consultants International (MEP Design Only)**

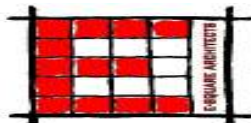
Review of complete design of Architectural layouts to make sure that the design adheres to Local and International Codes and Standards including obtaining all Local Authorities approvals. ADCi as registered "QSAS Service provider" was involved in obtaining QSAS approval on this prestigious project.

Value of Contract : QR 450 million

Start and Completion Dates

Start Date : March 2012

Completion Date : February 2013





COMMERCIAL BUILDING (3B+G+M+7) NEAR CENTER POINT

Type of Services: ✓ Design - Supervision - Project Management

Location and Description of the Project

Description : The project is a Commercial Building with 3B+G+M+7 configuration. The buildup area of the project is 35,000 sq.m. Three underground basements are used for car parks, while the ground floor and mezzanine floor are for show rooms and the rest of the floors are for office purpose

Location : Al Sadd

Project Works

Description : The project comprised of complete Design and preparation of Tender documents and obtaining all Local Authorities approvals i.e. Architectural, Planning, Kahramaa, Water, Drainage, Ooredoo & QCDD.

Nature of Involvement

Specialist : **Architectural Design (E-Square Architects – Lebanon)**

Sub-Consultants : **Almana Design Consultants International (MEP Design Only)**

Complete design of MEP Services which includes HVAC, Fire Protection, Plumbing, Drainage, Electrical and ELV Systems.

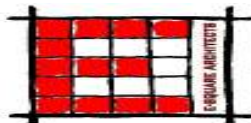
Review of complete design of Architectural layouts to make sure that the design adheres to Local and International Codes and Standards including obtaining all Local Authorities approvals.

Value of Contract : QR 136 million

Start and Completion Dates

Start Date : February 2012

Completion Date : March 2013



ALMANA DESIGN CONSULTANTS INTERNATIONAL | COMPANY PROFILE



COMMERCIAL BUILDING AT SALATA (3B+G+M+14)

Type of Services: ✓ Design - Supervision - Project Management

Location and Description of the Project

Description : The building is an office building with adjoining two. The project is a Commercial Building with 3B+G+M+16 configuration. The buildup area of the project is approximately 14,000 sq.m. Three underground basements are used for car parks, while the ground floor and mezzanine floors are for show rooms and the rest of the floors are for office purpose.

Location : Salata

Project Works

Description : The project comprised of complete Design and preparation of Tender documents and obtaining all Local Authorities approvals i.e. Architectural, Planning, Kahramaa, Water, Drainage, Ooredoo & QCDD.

Nature of Involvement

Specialist Consultants : ***Architectural Design (E-Square Architects – Lebanon)***

Sub-Consultants : ***Almana Design Consultants International (MEP Design Only)***

Complete design of MEP Services which includes HVAC, Fire Protection, Plumbing, Drainage, Electrical and ELV Systems.

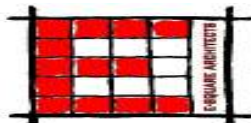
Review of complete design of Architectural layouts to make sure that the design adheres to Local and International Codes and Standards including obtaining all Local Authorities approvals.

Value of Contract : QR 48 million

Start and Completion Dates

Start Date : February 2012

Completion Date : February 2013





Location and Description of the Project

Description : The building project was awarded by the Philippine School Doha for Almana Design Consultants International for the design and supervision of construction of the new building.
The new building was intended for the children of Filipino Parents working in the State of Qatar. The levels of enrollment for the new school were the following: (Kindergarten,, Primary, Intermediate, Secondary)

ADCi integrated the "State of the Art" and led standards in the overall building design.

Plot Area = 14,374.80 sq.m.

The facilities comprises as follows: (150 air conditioned classrooms, 3,000 capacity gymnasium / multipurpose hall, 1 swimming pool, Parking for cars and buses, Science laboratories and Computer laboratories)

Location : Mesaimeer Area, Al Rayyan Municipality

Project Works

Description : The project comprised of the Design, Construction Supervision, for completion and maintenance of all services and external works.

Nature of Involvement

Main Consultant : *Almana Design Consultants International*

Complete design in all disciplines (i.e. Architectural, Structural, Electrical, Mech, Irrigation and HVAC) and Quantity Surveying Services.

Sub- Consultants : N/A

Value of Contract : QR 180 million

Start and Completion Dates

Start Date : February 2012

Completion Date : November 2013

DESIGN AND CONSTRUCTION OF NEW SCHOOL BUILDING FOR PHILIPPINE SCHOOL DOHA (PSD)

Type of Services: ✓ Design ✓ Supervision ✓ Project Management



Location and Description of the Project

Description : The project entailed the preparation of a Master Plan and Designs for the Re development of the existing Club Complex, for the next 15 years. It included preparation of as built drawings and a detail study of operational problems, for proposing improvements. Harmonizing of existing facilities as well as the newly introduced, to a comprehensive design layout. Central access ways for better utilization of facilities, was a primary requirement. Construction was to be in phases, so that the club activities are not fully disturbed.

Location : Mesaieed Industrial Area

Project Works

Description : The project comprised of the design, construction, completion and maintenance of all services and external works.

Nature of Involvement

Main Consultant : **Almana Design Consultants International**
Complete design in all disciplines (i.e. Architectural, Structural, Electrical, Mech, Irrigation and HVAC) and Quantity Surveying Services.

Sub-Consultants : **N/A**

Value of Contract : QR 75 million

Start and Completion Dates

Start Date : August 2006

Completion Date : October 2009

DEVELOPMENT OF AL BANUSH CLUB FOR QATAR FERTILIZER COMPANY (QAFCO)

Type of Services: ✓ Design ✓ Supervision ✓ Project Management



Location and Description of the Project

Description : The project comprised of the demolition of existing buildings and the construction and maintenance of a specialized Cardiology Centre, comprising the main building and ancillary buildings. The external works comprised of the main building, ancillary buildings and all other external services. The buildings were constructed using reinforced concrete with the main building being centrally air-conditioned with a chilled water A/C system.

Location : Rumailah

Project Works

Description : The project comprised of the design, construction, completion and maintenance of 3 storeys, complete with all services and external works.

Nature of Involvement

Main Consultant : *Almana Design Consultants International*
Complete design in all disciplines (i.e. Architectural, Structural, Electrical, Mech, Irrigation and HVAC) and Site Supervision

Sub- Consultants : **David Adamson & Partners Overseas**

Value of Contract : QR 89.5 million

Start and Completion Dates

Start Date : 07 July 2001

Completion Date : 27 December 2004

CARDIOLOGY CENTRE UNIT (MEDICAL TOWER)

Type of Services: ✓ Design ✓ Supervision ✓ Project Management



PRIMARY HEALTH CARE CENTER AT AL RODA

Type of Services: ✓ Design – Supervision – Project Management

Location and Description of the Project

Description : The projects are to provide primary healthcare facilities, offering Primary Care Diagnostic and Therapeutic Services, to the public ,of a catchment population of 35,000.

Each center provides 20 specifically identified services, including 13 clinics, from General Medicine to Cardiology and Mental Health, with other services, covering Health Education as well.

Location : Al Roda

Project Works

Description : The project comprised of the design, construction, completion and maintenance of all services and external works.

Nature of Involvement

Main Consultant : *Almana Design Consultants International*
Complete design in all disciplines (i.e. Architectural, Structural, Electrical, Mech, Irrigation and HVAC).

Sub- Consultants : *N/A*

Value of Contract : QR 40 million

Start and Completion Dates

Start Date : April 2007

Completion Date : March 2010



Location and Description of the Project

Description : The project comprised of providing facilities covering 15,00 sq.m of area, for interactive and regulatory functions with state and private sector media, both print and electronic. The building included Office Spaces, Meeting and Discussion Rooms, Conference Halls, Multipurpose halls, Mini theatres, IT Rooms and ancillary facilities.

Location : Wadi Sail

Project Works

Description : The project comprised of the design, construction, completion and maintenance of all services and external works.

Nature of Involvement

Main Consultant : *Almana Design Consultants International*
Complete design in all disciplines (i.e. Architectural, Structural, Electrical, Mech, Irrigation and HVAC).

Sub-Consultants : **N/A**

Value of Contract : QR 105 million

NEW PRINTING & PUBLISHING BUILDING FOR QATAR RADIO AND TELEVISION CORPORATION

Type of Services: ✓ Design – Supervision – Project Management

Start and Completion Dates

Start Date : January 2008

Completion Date : March 2010



GENERAL CLEANING PROJECTS COMPOUND COMPLEX

Type of Services: ✓ Design – Supervision – Project Management

Location and Description of the Project

Description : The project is to provide a central facility for the complete running and maintenance of the vehicle and equipment fleet for the collection and disposal of garbage in Doha. A fleet of Trucks, Lorries and all other equipment and passenger vehicles, including busses are to be parked in the premises. Provision for Washing, Cleaning and Mechanical Maintenance of vehicles and Equipment is a major technical facility provided in the complex. Fuel storage and filling is a specialized item in the works.

The Development also provided residential accommodation and related civic amenities to all the staff, from the junior to the top. It included bachelor as well as married type accommodation.

The Development is located in a plot exceeding 90,000 sq.m.

Location : Abu Hamour

Project Works

Description : The project comprised of the design, construction, completion and maintenance of all services and external works.

Nature of Involvement

Main Consultant : *Almana Design Consultants International*

Complete design in all disciplines (i.e. Architectural, Structural, Electrical, Mech, Irrigation and HVAC) and Quantity Surveying Services.

Sub-Consultants : N/A

Value of Contract : QR 315 million

Start and Completion Dates

Start Date : August 2007

Completion Date : March 2010



Location and Description of the Project

Description : The project comprised of Renovation work to TV Building, FM Radio Building and the AM Radio Building which are almost twenty years old. Façade improvement work and upgrading of interior finishes for a modern look as well as for better performance were the main criteria. The project also covered improvements to all the Building Services.

Location : Wadi Sail

Project Works

Description : The project comprised of the design, construction, completion and maintenance of all services and external works.

Nature of Involvement

Main Consultant : ***Almana Design Consultants International***
Complete design in all disciplines (i.e. Architectural, Structural, Electrical, Mech, Irrigation and HVAC).

Sub-Consultants : **N/A**

Value of Contract : QR 58 million

RENOVATION WORK TO EXISTING BUILDINGS FOR QATAR RADIO & TELEVISION CORPORATION

Type of Services: ✓ Design – Supervision – Project Management

Start and Completion Dates

Start Date : January 2008

Completion Date : March 2010



MECHANICAL WORKSHOP FOR MANNAI CORPORATION AT INDUSTRIAL AREA

Type of Services: ✓ Design ✓ Supervision ✓ Project Management

Location and Description of the Project

Description : This Project comprised of triple height steel workshop structure, for Mechanical Fabrication and Milling work, housing heavy duty lathe/milling machines, and provided two gantry cranes along the length of the workshop.

It also provided office spaces, Toilets and other ancillary facilities required for the complex. Heavy duty floors and five large double height roller shutters were other main features of the work in addition to required building services.

Location : Industrial Area

Project Works

Description : The project comprised of the design, construction, completion and maintenance of all services and external works.

Nature of Involvement

Main Consultant : *Almana Design Consultants International*
Complete design in all disciplines
(i.e. Architectural, Structural, Electrical, Mech, Irrigation and HVAC).

Sub-Consultants : *N/A*

Value of Contract : QR 7 million

Start and Completion Dates

Start Date : April 2008

Completion Date : December 2009



COMMERCIAL AND OFFICE DEVELOPMENT AT GRAND HAMAD AVENUE

Type of Services: ✓ Design ✓ Supervision – Project Management

Location and Description of the Project

Description : Basement + Ground + Mezzanine + 6th Level and Penthouse Modern with Islamic Architecture

Location : Al Ganim, Grand Hamad Avenue, Doha, Qatar

Project Works

Description : The works comprises the construction of the following buildings including MEP works:

1. The superstructure will be reinforced concrete in situ frame—columns, beams with maximized open spaces for office volume, The masonry infill walls are well insulated. Anodised aluminum double glazed tinted solar reflective glazing finishes to external walls. Ceramic tiles, metal panels, minerallite render granite.
2. High insulation factors were used in roof, wall and ground floor slab design. As stated generally, finishings were chosen to provide ease of cleaning and maintenance.
3. All works were carried out to current, acceptable International Standards and Codes of Practice

Nature of Involvement

Main Consultant : **Almana Design Consultants International**
 Complete design in all disciplines (i.e. Architectural, Structural, Electrical, Mech, Irrigation and HVAC) and Quantity Surveying

Sub- Consultants : **Nil**

Value of Contract : QR 21.5 million

Start and Completion Dates

Start Date : 23 May 2001
 Completion Date : 19 October 2002





DOHA AMUSEMENT PARK, WEST BAY

Type of Services: ✓ Design ✓ Supervision – Project Management

Location and Description of the Project

Description : The project consisted of various buildings (i.e. Main and Family Entrance, Administration, Restaurant, Indoor Games, Workshop Facilities, Toilets, Coffee Shops, Complex, Rail Road Station, Service Yard and Pump Room) as well as all associated electrical, air-conditioning, plumbing and drainage services. The site was to be serviced with all main services including drinking water, irrigation, drainage, electrical lighting and power services and telephone connections.

Project also included the installation of various adult and children's ride.

Location : West Bay, Qatar

Project Works

Description : The project comprised of the preparation of the foundation design of all the buildings and rides, supervision and maintenance of buildings and associated services including supervision of the installation of the rides

Nature of Involvement

Main Consultant : *Almana Design Consultants International*
Complete design in all disciplines (i.e. Architectural, Structural, Electrical, Mech, Irrigation and HVAC) and site supervision

Sub-Consultants : **Davis Langdon Arabian Gulf—QS**

Value of Contract : QR 40 million

Start and Completion Dates

Start Date : 21 April 1990

Completion Date : 31 August 1994



DUKHAN HOUSING PROJECT - PHASE VIII

Type of Services: ✓ Design - Supervision - Project Management

Location and Description of the Project

Description : The work comprised of Design of 20 Married, Senior Staff 4 Bedroom Duplex Houses, 60 Married, Senior Staff 3 Bedroom Duplex Houses, 30 Married, Senior Staff 2 Bedroom Duplex Apartments with Master Layout including roads, all infrastructure, Irrigation, Landscaping etc. and the Site Geotech and Topo Surveys.

Location : Dukhan Township

Project Works

Description : The project comprised of the design, construction, completion and maintenance of all services and external works.

Nature of Involvement

Main Consultant : ***Almana Design Consultants International***
Complete design in all disciplines (i.e. Architectural, Structural, Electrical, Mech, Irrigation and HVAC) and Quantity Surveying Services.

Sub-Consultants : **N/A**

Value of Contract : QR 380 million

Start and Completion Dates

Start Date : December 2006

Completion Date : December 2008



H.I.D. LAMP FACTORY AND WAREHOUSE AT INDUSTRIAL AREA

Type of Services: ✓ Design – Supervision – Project Management

Location and Description of the Project

Description : The project is to provide a central facility for the Factory and Warehouse for the Production of High Intensity Discharge Lamps for Al Shams Lighting Technologies, a J.V. with a Korean Company. HVAC Designing was important in maintaining the required dust free environmental conditions with correct Temperature, and Humidity.

Location : Industrial Area

Project Works

Description : The project comprised of the design, construction, completion and maintenance of all services and external works.

Nature of Involvement

Main Consultant : *Almana Design Consultants International*
Complete design in all disciplines (i.e. Architectural, Structural, Electrical, Mech, Irrigation and HVAC) and Quantity Surveying Services.

Sub-Consultants : N/A

Value of Contract : QR 6 million

Start and Completion Dates

Start Date : April 2006

Completion Date : December 2007



QATAR SHIPPING COMPANY HEADQUARTERS BUILDING

Type of Services: ✓ Design ✓ Supervision – Project Management

Location and Description of the Project

Description : A corporate headquarters Building Design for the client together with accommodation to let the design development was challenging due to the linear nature of the site and its relationship with the Cornice . The plans feature two wings of offices with central atrium volume. The building interfaces with adjoining sites and roads through developed soft and hard landscaped areas. Though originally designed for Ground Floor + 3 it was later extended to Ground Floor + 5 with minimal disruption . The specifications of the building are of high quality, with much emphasis on low maintenance finishing.

Location : West Bay, Qatar

Project Works

Description : The project comprised of the design, construction, completion and maintenance of 5 storeys , complete with all services and external works.

Nature of Involvement

Main Consultant : *Almana Design Consultants International*
Complete design in all disciplines (i.e. Architectural, Structural, Electrical, Mech, Irrigation and HVAC) and site supervision

Sub- Consultants : N/A

Value of Contract : QR 21.8 million

Start and Completion Dates

Start Date : 13 April 1996

Completion Date : 31 August 1999



RESIDENTIAL AND COMMERCIAL DEVELOPMENT AT UMM GHUWALINA

Type of Services: ✓ Design ✓ Supervision – Project Management

Location and Description of the Project

Description : A 13-storey residential and commercial building with a luxurious penthouse (with swimming pool). The ground floor and mezzanine areas were designed for the main branch of a commercial bank with central core as well designed interiors. The remaining floors (1st to 12th floors) are very functional for offices, with complete service amenities including a service lift. The conceptual design development is a mixed combination of traditional (Qatar) architecture well blended on glass (for great view) and natural stone materials. The four basements for parking feature a double layered parking for each basement floor that gives good parking services. Architectural and other disciplines (Structural & MEP) were well-coordinated for high quality specifications and functional use of the building.

Location : Umm Ghuwalina, Doha, Qatar

Project Works

Description : The project comprised of conceptual design till construction phase.

Nature of Involvement

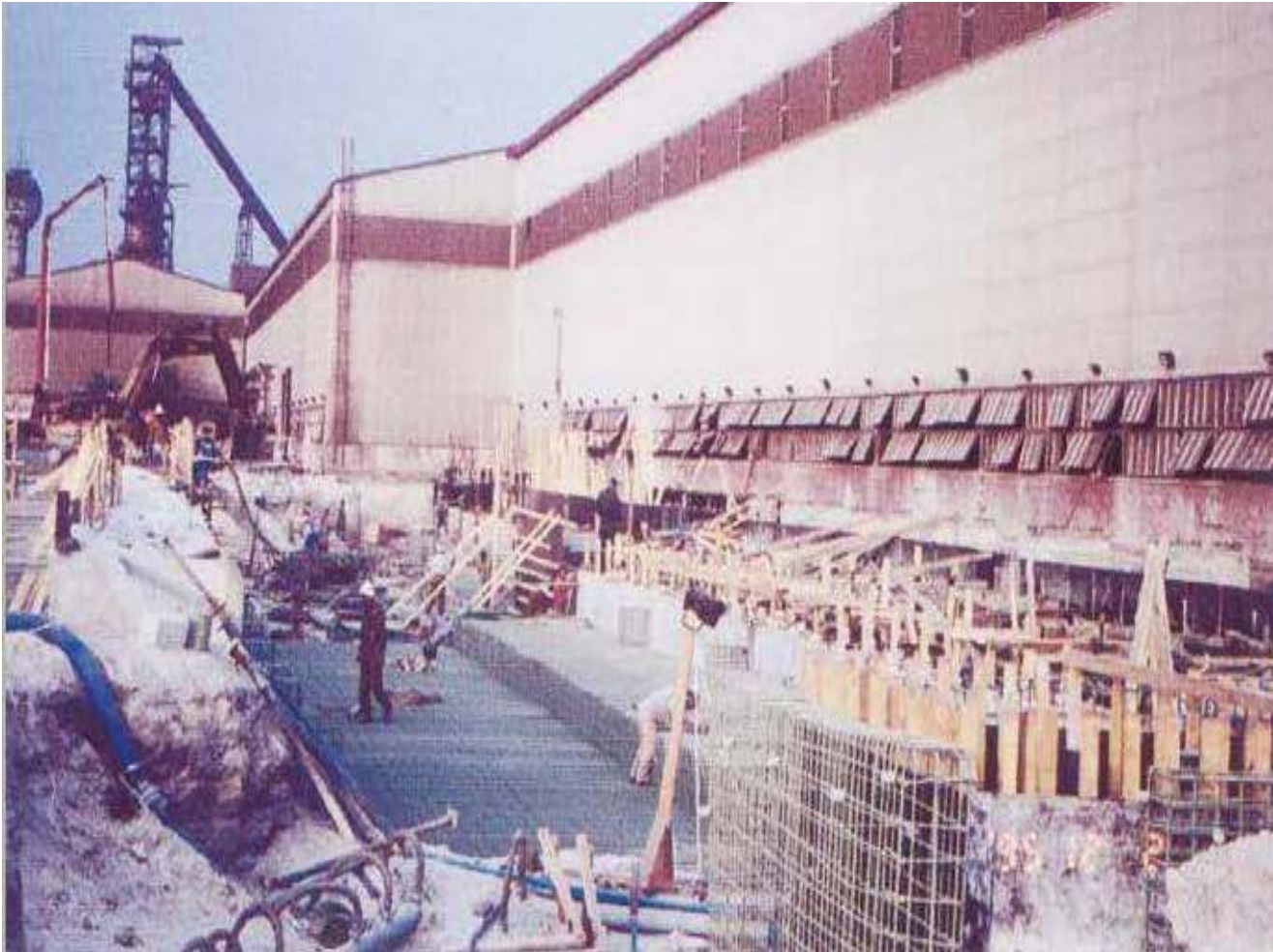
Main Consultant : *Almana Design Consultants International*
Complete design in all disciplines (i.e. Architectural, Structural, Electrical, Mech, Irrigation and HVAC) and Quantity Surveying

Sub-Consultants : Nil

Value of Contract : QR 162 million

Start and Completion Dates

Start Date : 20 April 2007



ROLLING MILL FOR QATAR STEEL

Type of Services: ✓ Design ✓ Supervision – Project Management

Location and Description of the Project

Description : The project comprised of reinforced concrete ground slabs and machine / equipment foundations on piles; reinforced concrete oil cellar; concrete in protected watertight construction; provision of structural steel frame including support frame for crane; low level blockwork wall at the perimeter; steel sheet cladding and roofing for the steel frame incorporating translucent skylight louvers and sliding doors; extending power, lighting, fire protection, public address system and lighting protection installation ; ventilation supplied by roof mounted extract fans, alterations to existing rolling mill cladding.

Location : Mesaieed, Qatar

Project Works

Description : The project included the design, construction, completion and maintenance of the extension to the existing rolling mill, electrical rooms, store and extension to roll shop, water treatment and scale pit and alteration to roof drainage system.

Nature of Involvement

Main Consultant : *Almana Design Consultants International*
Complete design in all disciplines
(i.e. Architectural, Structural, Electrical, Mech, Irrigation and HVAC) and site supervision

Sub- Consultants : **D.G. Jones & Partners—Quantity Surveyors**

Value of Contract : QR 45 million

Start and Completion Dates

Start Date : 06 May 1995

Completion Date : 17 August 1995



SENIOR STAFF MESS FACILITIES AT DUKHAN FOR QP

Type of Services: ✓ Design – Supervision – Project Management

Location and Description of the Project

Description : The building was developed to provide a suitable accommodation for the Senior Staff members of QP, Dukhan. The design evolved after much consultation with the managerial staff and the QP Engineering Department. Initially a single level structure was proposed but after review it was agreed that the building will be elevated to provide a sea view. A lower ground floor plan was added to the enclosed services compound and car par. The building provides high quality catering facilities which will also service the adjoining club areas. A large function suite which can be subdivided as required, lounge areas and accompanying toilets were also included. An external terrace adjoins the function suite and can utilized for dining purposes, weather permitting.

Location : Dukhan, Qatar

Project Works

Description : The building is of reinforced concrete together with the enclosed services compound and car park.

Nature of Involvement

Main Consultant : ***Almana Design Consultants International***
Complete design in all disciplines (i.e. Architectural, Structural, Electrical, Mech, Irrigation and HVAC) and site supervision

Sub-Consultants : ***N/A***

Value of Contract : QR 9.8 million

Start and Completion Dates

Start Date : 15 August 1998

Completion Date : 14 May 1999



TWO-STOREY OFFICE BUILDING FOR OPERATION & MAINTENANCE

Type of Services: ✓ Design – Supervision – Project Management

Location and Description of the Project

Description : The project comprised of the demolition of miscellaneous works and the construction and maintenance of a two-storey office block, including a substation. The external works comprised of paving, landscaping, shaded parking, roads, and all other external services. The buildings were constructed using reinforced concrete with the main building being centrally air-conditioned.

Location : Al Jadeeda, Doha

Project Works

Description : The project comprised of full pre-contract design services including preparing of tender documents

Nature of Involvement

Main Consultant : *Almana Design Consultants International*
Complete design in all disciplines (i.e. Architectural, Structural, Electrical, Mech, Irrigation and HVAC) and Quantity Surveying

Sub-Consultants : **David Adamson & Partners Overseas (QS)**

Value of Contract : QR 10 million

Start and Completion Dates

Start Date : 08 December 2002

Completion Date : 15 May 2003



Health Clinic for Ministry of Education
- Front Elevation

HEALTH BUILDINGS FOR MINISTRY OF EDUCATION

Type of Services: ✓ Design ✓ Supervision – Project Management

Location and Description of the Project

Description : The Health Centre provides a medical service for school children and staff in Doha and also takes referral patients from other outlying clinics in Qatar, thereby operating as a central Polyclinic. The Centre was planned with departments for emergency, internal medicine, ears, nose and throat, etc, dental gynecology, cardiology, surgical skin, pediatric and psychiatric, together with support facilities including laboratory, x-ray, pharmacy medical records, administration, staff facilities, sterile supplies, stores, workshops, etc.

Advantage was taken of the slopping site to provide a semi-basement car park for the centre. The accommodation was planned around the central courtyards to achieve a pleasant and soothing visual environment. The courtyards can also be used by children and parents while waiting for treatment.

Location : Qatar

Nature of Involvement

Main Consultant : *Almana Design Consultants International*
Complete design in all disciplines (i.e. Architectural, Structural, Electrical, Mech, Irrigation and HVAC) and Quantity Surveying

Sub-Consultants : N/A

Value of Contract : QR 30.2 million

Start and Completion Dates

Start Date : March 1974

Completion Date : September 1975



Location and Description of the Project

Description : The project is basically an extension to Qatar Steel Company's steel making facilities, including the installation of the 80-ton Electric Arc Furnace No. 3.

Location : Mesaieed, Qatar

Project Works

Description : The project included the design of all civil works and the preparation of production drawing and tender documents. The design of civil work was as follows:

- Design of the structural steel work supporting 11 cranes with capacities varying from 10 to 120 tons and a platform carrying an average load of 30 KN/m².
- Design of piled foundations for all the equipment.
- Design of associated buildings such as electrical rooms, pump house etc.

Nature of Involvement

Main Consultant : **Mannesman Demag Huttentechnik, Germany**

Sub-Consultants : **Almana—Bylander**

Preparation of the design of all civil works, preparation of production drawings, tender documents and site supervision.

Value of Contract : QR 65 million (Steel & Civil Works)

Start and Completion Dates

Start Date : 21 July 1996

Completion Date : 25 October 1997

EXTENSION TO THE STEEL MAKING FACILITIES & INSTALLATION OF ELECTRIC ARC FURNANCE NO. 3 FOR QATAR STEEL

Type of Services: ✓ Design ✓ Supervision – Project Management



DOHA EXHIBITION CENTRE

Type of Services: ✓ Design ✓ Supervision – Project Management

Location and Description of the Project

Description : The project was mainly of 30 meters span space trusses supported on steel columns with corrugated steel sheet roof cladding panels measuring approximately 14,800 square meters.

Location : West Bay, Qatar

Project Works

Description : The project comprised of an exhibition hall, stores, workshops and all public facilities, complete with all services, service yards and external works.

Nature of Involvement

Main Consultant : **Almana Design Consultants International**
Complete design in all disciplines (i.e. Architectural, Structural, Electrical, Mech, Irrigation and HVAC) and Site Supervision

Sub-Consultants : **Davis Langdon Arabian Gulf—QS**

Value of Contract : QR 35 million

Start and Completion Dates

Start Date : 21 April 1990

Completion Date : 31 May 1993

Projects Completed



Qatar National Bank Branch at Al Rayyan



Qatar National Bank Branch at Mesaieed



*Commercial Complex for Arab Centre
for Livestock Development*



Qtel Building at Wakra



Four Bedroom Villa Complex for QP at Dukhan



Al Gharafa Clinic for HMC

"A" Grade

آيه. دي. سي. آي.
A.D.C.i.

ALMANA
DESIGN CONSULTANTS INTERNATIONAL
المانع للتصاميم والاستشارات العالمية

Projects Completed



Two Bedroom Villa Complex for QP at Dukhan



Three Bedroom Villa Complex for QP at Dukhan



Four Bedroom Villa Complex for QP at Dukhan



Extension to Office Building for Qatar Steel (Mesaieed)



Site Plan - Park No. 1 at Al Wakrah



Guards Residential Complex at Al Wajba

"A" Grade

أيه. دي. سي. أي.
A.D.C.i.

ALMANA
DESIGN CONSULTANTS INTERNATIONAL
المانع للتصاميم والاستشارات العالمية

Design Competition Projects



Design Competition of Residential Complex for QNCC



Design Competition of QAFCO Headquarters at Doha



Commercial Complex for Arab Centre for Livestock Development



Design Competition of Orthopedic Hospital at Doha for Olympic Committee



Commercial/Residential Tower at Al Lusail for Mr. Jassem Al Mansouri



Design Competition for Proposed Commercial/Residential Tower for Sheikh Saoud Bin Khalid Al-Thani

"A" Grade

أي. دي. سي. أي.
A.D.C.i.

ALMANA
DESIGN CONSULTANTS INTERNATIONAL
المانع للتصاميم والاستشارات العالمية

PREVIOUS AND CURRENT PROJECTS

Client's Name	Description of Project	Consultant's Involvement	Status of Project	Value of the Project
OFFICES AND COMMERCIAL				
SHEIKH MANSOUR BIN JABOR AL THANI	<p>DESIGN OF COMMERCIAL BUILDING AT AIRPORT ROAD (2B+G+M+7 FLOORS)</p> <p>The project is a commercial building with 2B+G+M+7 configuration. The buildup area of the project is approximately 50,000 sq.m. Two underground basements are used for car parks, while the ground floor and mezzanine floor are for show rooms and the rest of the floors are for office purpose.</p>	<p>Design Architect: <i>(E-Square Architects – Lebanon)</i></p> <p>Sub-Consultants: (MEP Design only) <i>Almana Design Consultants International</i></p> <p>Complete design of MEP Services which includes HVAC, Fire Protection, Plumbing, Drainage, Electrical and ELV Systems.</p> <p>Review of complete design of Architectural layouts to make sure that the design adheres to Local and International Codes and Standards including obtaining all Local Authorities approvals.</p>	Completed (See attached Completion Certificate)	QR. 285 M
SHEIKH MANSOUR BIN JABOR AL THANI	<p>DESIGN OF COMMERCIAL BUILDING (3B+G+7) NEAR CENTER POINT</p> <p>The project is a Commercial Building with 3B+G+M+7 configuration. The buildup area of the project is 35,000 sq.m. Three underground basements are used for car parks, while the ground floor and mezzanine floor are for show rooms and the rest of the floors are for office purpose.</p>	<p>Design Architect: <i>(E-Square Architects – Lebanon)</i></p> <p>Sub-Consultants: (MEP Design only) <i>Almana Design Consultants International</i></p> <p>Complete design of MEP Services which includes HVAC, Fire Protection, Plumbing, Drainage, Electrical and ELV Systems.</p> <p>Review of complete design of Architectural layouts to make sure that the design adheres to Local and International Codes and Standards including obtaining all Local Authorities approvals.</p>	(See attached Completion Certificate)	QR. 136 M
SHEIKH MANSOUR BIN JABOR AL THANI	<p>TWIN TOWERS AT MARINA DISTRICT, LUSAIL</p> <p>The building is an office building with adjoining two towers. Each tower has 32 floors with 3 levels of common basements for car parks. The buildup area is approximately 98,500 sq.m. The building is designed for QSAS rating two (2) stars.</p>	<p>Design Architect: <i>(E-Square Architects – Lebanon)</i></p> <p>Sub-Consultant: (MEP Design only) <i>Almana Design Consultants International</i></p> <p>Review of complete design of Architectural layouts to make sure that the design adheres to Local and International Codes and Standards including obtaining all Local Authorities approvals. ADCi as registered "QSAS Service provider" was involved in obtaining QSAS approval on this prestigious project.</p>	(See attached Completion Certificate)	QR. 450 M
SHEIKH MANSOUR BIN JABOR AL THANI	<p>COMMERCIAL BUILDING AT SALATA (3B+G+M+14)</p> <p>The project is a Commercial Building with 3B+G+M+16 configuration. The buildup area of the project is approximately 14,000 sq.m. Three underground basements are used for car parks, while the ground floor and mezzanine floors are for show rooms and the rest of the floors are for office purpose.</p>	<p>Design Architect: <i>(E-Square Architects – Lebanon)</i></p> <p>Sub-Consultants: (MEP Design only) <i>Almana Design Consultants International</i></p> <p>Complete design of MEP Services which includes HVAC, Fire Protection, Plumbing, Drainage, Electrical and ELV Systems.</p> <p>Review of complete design of Architectural layouts to make sure that the design adheres to Local and International Codes and Standards including obtaining all Local Authorities approvals.</p>	(See attached Completion Certificate)	QR. 48 M

Client's Name	Description of Project	Consultant's Involvement	Status of Project	Value of the Project
OFFICES AND COMMERCIAL				
QATAR TELECOM (HATCO)	DESIGN OF QNBN CENTRAL OFFICE BUILDINGS FOR QATAR TELECOM	Main Consultant: <i>Almana Design Consultants International</i>	Currently under Design Stage	QR. 55 M
PRIME LANDS QATAR	DESIGN OF HEADQUARTERS BUILDING INCLUDING QSAS APPROVALS	Main Consultant: <i>Almana Design Consultants International</i>	Currently under Design Stage	QR. 205 M
RESIDENTIAL				
QATAR REAL ESTATE INVESTMENT CO./ QATAR PETROLEUM COMPANY	DUKHAN HOUSING PROJECT – PHASE VIII The work comprised of Design of 20 Married, Senior Staff 4 Bedroom Duplex Houses, 60 Married, Senior Staff 3 Bedroom Duplex Houses, 30 Married, Senior Staff 2 Bedroom Duplex Apartments with Master Layout including roads, all infrastructure, Irrigation, Landscaping etc. and the Site Geotech and Topo Surveys.	Main Consultant: <i>Almana Design Consultants International</i> Complete “in-house” design in all disciplines (i.e. Architectural, Structural, Electrical, Mech., Irrigation and HVAC) and Quantity Surveying Services.	Design Completed	QR. 380 M
AWQAF	APARTMENT BUILDING – B+7 FLOORS AT UM GHOWALINA The project is construction of Residential Building on plot area 1859m2 composed of (GF+B+7 Typical Floors) consists of no (58) flats, No. (69) car parks, No. (3) Elevators, Guardhouse (Bedroom + Hall + Kitchen + Bathroom), Gym and Children Play Area.	Main Consultant: (Design Review & Supervision Services) <i>Almana Design Consultants International</i> Responsible for complete design review of all disciplines designed by other Consultants and modify the design, as necessary, to meet the Local Regulations / Standards and Client's / End User requirements. Also involved in obtaining re-approvals of all disciplines due to various changes in the design. Carryout complete Supervision / Project Management Services.	Awaiting Award to successful Tenderer / Contractor by Client	QR. 51 M
AWQAF	APARTMENT BUILDING – B+G+8 FLOORS AT BIN MAHMOUD The project is construction of 2 Residential Buildings on plot area 3734 m2 composed of (GF+B+7 Typical Floors) connected in basement and Ground Floor and separated from first floor to seventh floor. Consists of No. (42) flats and control watching room in building (A) – No. (35) flats, Gym, Children Play Area (Indoor – Outdoor), Guard Room + Toilet + Pantry in Ground Floor No. (118) car parks distributed in basement and ground floor, No. (5) Elevators.	Main Consultant: (Design Review & Supervision Services) <i>Almana Design Consultants International</i> ADCi role was to review the complete design and make necessary modifications to meet End User requirement and appropriate design standards and re-obtain all Local Authorities approvals and carryout Supervision / Project Management.	Under Tender Evaluation State	QR. 110 M

Client's Name	Description of Project	Consultant's Involvement	Status of Project	Value of the Project
GOVERNMENT AND MILITARY				
QATAR ARMED FORCES	<p>PROFESSIONAL SERVICES FOR DETAIL DESIGN OF INDOOR AND SEMI-INDOOR SHOOTING RANGE (25M PISTOL & 300M RIFLE) AT ZIKRIT CAMP (E-205-01)</p> <p>The location of shooting ranges is at Zikrit Camp area which is 90 Km from Doha.</p>	<p>Main Consultant: <i>Almana Design Consultants International</i></p> <p>Complete design in all disciplines (i.e. Architectural, Structural, Electrical, Mech., Irrigation and HVAC) and Quantity Surveying Services.</p>	Currently Under Design Stage	QR. 42.5 M
QATAR ARMED FORCES	<p>PROFESSIONAL SERVICES FOR DETAIL DESIGN OF INDOOR AND SEMI-INDOOR SHOOTING RANGE (25M PISTOL & 300M RIFLE) AT SAILIYAH CAMP (F-306-01)</p>	<p>Main Consultant: <i>Almana Design Consultants International</i></p> <p>Complete design in all disciplines (i.e. Architectural, Structural, Electrical, Mech., Irrigation and HVAC) and Quantity Surveying Services.</p>	Currently Under Design Stage	QR. 40 M
QATAR ARMED FORCES	<p>PROFESSIONAL SERVICES FOR DETAIL DESIGN OF TWO (2) NOS. OUTDOOR SHOOTING RANGE (600M MACHINE GUN & 300M RIFLE) AT ZIKRIT CAMP (E-312-01)</p>	<p>Main Consultant: <i>Almana Design Consultants International</i></p> <p>Complete design in all disciplines (i.e. Architectural, Structural, Electrical, Mech., Irrigation and HVAC) and Quantity Surveying Services.</p>	Currently Under Design Stage	QR. 40 M
EDUCATION				
DPS - MODERN INDIAN SCHOOL	<p>CONSTRUCTION OF SCHOOL PROJECT</p> <p>The work comprises construction of School Building Complex including external works i.e. soft and hard landscaping, Guard house and Boundary wall.</p>	<p>Main Consultant: <i>Almana Design Consultants International</i></p> <p>MEP Supervision Services</p>	Completed	QR. 60.5 M
QATAR PETROLEUM (MAIN CONSULTANTS –M/S TECHNITAL)	<p>COMMUNITY COLLEGE</p> <p>The project is designed with complete facilities for K1 – K12 students. The facilities includes Swimming Pool, Sports Facilities, Auditorium, Theaters, Multi-purpose Halls, Workshop, Laboratories, etc.</p>	<p>Main Consultant: (MEP Design) <i>Technital</i></p> <p>Sub Consultant: <i>Almana Design Consultants International</i></p> <p>Complete design in MEP Services (i.e. HVAC, Plumbing, Drainage, LPG, Swimming Pool, Fountains, Electrical etc.)</p>	Design On-Going	QR. 500 M

Client's Name	Description of Project	Consultant's Involvement	Status of Project	Value of the Project
EDUCATION				
PHILIPPINE SCHOOL DOHA	<p>CONSULTANCY SERVICES FOR THE DESIGN AND CONSTRUCTION OF NEW SCHOOL BUILDING OF PHILIPPINE SCHOOL DOHA</p> <p>The building project was awarded by the Philippine School Doha for Almana Design Consultants International for the design and supervision of construction of the new building.</p> <p>The new building was intended for the children of Filipino Parents working in the State of Qatar. The levels of enrollment for the new school were the following:</p> <ol style="list-style-type: none"> 1. Kindergarten 2. Primary 3. Intermediate 4. Secondary <p>ADCI integrated the "State of the Art" and led standards in the overall building design.</p> <p>Plot Area = 14,374.80 sq.m.</p> <p>The facilities comprises as follows:</p> <ol style="list-style-type: none"> 1. 150 air conditioned classrooms 2. 3,000 capacity gymnasium / multipurpose hall 3. 1 swimming pool 4. Parking for cars and buses 5. Science laboratories 6. Computer laboratories 	<p>Main Consultant: <i>Almana Design Consultants International</i></p> <p>Complete design in all disciplines (i.e. Architectural, Structural, Electrical, Mech., Irrigation and HVAC) and Quantity Surveying Services.</p>	Design Stage On-going	QR. 180 M
HEALTH AND WELFARE				
PUBLIC WORKS AUTHORITY / HMC	<p>EXPANSION OF 2 NO. CLINICS/MEDICAL CENTRES (OMAR BIN KHATIB & AL WAKRAH)</p> <p>The project is for the construction of annexes to two number Health Centres as follows:</p> <ol style="list-style-type: none"> 1. Internal modification to existing facilities including all associated services. 2. External works including ancillary services. 3. Two (2) single storey annex block extensions approximately 663 m² (Omar Bin Khatab). 4. Two storey building linked to existing H.C. approximately 600 m² (Al Wakra) 	<p>Main Consultant: <i>Almana Design Consultants International</i></p> <p>Supervision Services</p>	Completed	QR. 42 M

Client's Name	Description of Project	Consultant's Involvement	Status of Project	Value of the Project
PUBLIC WORKS AUTHORITY / HMC	<p>MEDICAL TOWER (CARDIOLOGY CENTRE) FOR HAMAD MEDICAL CORPORATION</p> <p>The project is the construction of a 120 Bed specialist Cardiology Unit for Hamad Corporation at Rumailah – Doha. The project consists of a basement, ground floor, first floor, second floor and ancillary buildings spread over a total built up area of 25,0002 m.</p>	<p>Main Consultant: <i>Almana Design Consultants International</i></p> <p>Supervision Services</p>	Completed	QR. 198 M
PUBLIC WORKS AUTHORITY / HMC	<p>PROPOSED PRIMARY HEALTH CARE CENTRES AT AL RODA AND AL NUAIM FOR HAMAD MEDICAL CORPORATION</p> <p>The project is a vast primary health centre that intend to addressed the demand of such facility into the growing population to the 2 locations, it is consisting of basement, ground plus 1 storey reinforced concrete structure including ancillary blocks, soft and hard landscaping.</p>	<p>Main Consultant: <i>Almana Design Consultants International</i></p> <p>Complete design in all disciplines (i.e. Architectural, Structural, Electrical, Mech., Irrigation and HVAC) and Quantity Surveying Services.</p>	Completed	QR. 36 M
SPORTS & LEISURE				
QATAR FERTILISER COMPANY	<p>DEVELOPMENT OF AL BANUSH CLUB INCLUDING SOFT AND HARD LANDSCAPING</p> <p>The project entailed the preparation of a Master Plan and Designs for the Re development of the existing Club Complex, for the next 15 years. It included preparation of as built drawings and a detail study of operational problems, for proposing improvements. Harmonizing of existing facilities as well as the newly introduced, to a comprehensive design layout. Central access ways for better utilization of facilities, was a primary requirement. Construction was to be in phases, so that the club activities are not fully disturbed.</p>	<p>Main Consultant: <i>Almana Design Consultants International</i></p> <p>Preparation of As Built Drawings and Complete design in all disciplines (i.e. Architectural, Structural, Electrical, Mech. and Quantity Surveying) and Supervision Services.</p>	<p>Design Completed</p> <p>On-Going Supervision Currently</p>	QR. 75 M
INDUSTRY AND AGRICULTURE				
PUBLIC WORKS AUTHORITY	<p>GENERAL CLEANING PROJECTS COMPOUND COMPLEX</p> <p>The project is to provide a central facility for the complete running and maintenance of the vehicle and equipment fleet for the collection and disposal of garbage in Doha. A fleet of Trucks, Lorries and all other equipment and passenger vehicles, including busses are to be parked in the premises. Provision for Washing, Cleaning and Mechanical Maintenance of vehicles and Equipment is a major technical facility provided in the complex. Fuel storage and filling is a specialized item in the works.</p> <p>The Development also provided residential accommodation and related civic amenities to all the staff, from the junior to the trop. It included bachelor as well as married type accommodation.</p> <p>The Development is located in a plot exceeding 90,000 sq.m.</p>	<p>Main Consultant: <i>Almana Design Consultants International</i></p> <p>Complete design of all services (i.e. Architectural, Structural, Electrical, Mech. and HVAC).</p>	Completed	QR. 315 M

Client's Name	Description of Project	Consultant's Involvement	Status of Project	Value of the Project
INDUSTRY AND AGRICULTURE				
AL SHAMS ADVANCED LIGHTING TECHNOLOGIES	HID LAMP FACTORY The project consists of designing of factory producing fluorescent lamps at New Industrial area, with administration building, Guard house etc.	Main Consultant: Almana Design Consultants International Complete "in-house" design of all services including Quantity Services (i.e. Architectural, Structural, Electrical, Mech. and HVAC).	Completed	QR. 7 M
QATAR STEEL COMPANY / M/S M.N. DASTURCO	ELECTRIC FURNACE EFR5 PROJECT	Main Consultant: Almana Design Consultants International Review of complete design of Architectural layouts to make sure that the design adheres to Local and International Codes and Standards including obtaining all Local Authorities approvals.	Currently on-going	QR. 200 M
MOWASALAT	DESIGN OF BUS HUB COMPLEX (SHOWROOM & OFFICES) The project consists of basement ground / mezzanine plus 2 floors, with an approx. built up area of 58,692 sq.m., this is to cater bus hub facility with offices and showroom.	Main Consultant: Almana Design Consultants International Complete "in-house" design package including Quantity Surveying Services i.e. preparation of tender documents and supervision Services.	Currently on-going	QR. 160 M
MOWASALAT	DESIGN AND SUPERVISION CONSULTANCY FOR AL KHOR LAND The project is a complex development on a 20,006 sq.m. of land with the following facilities: a) accommodation block - ground plus 2 storey structure b) offices c) clinic d) mosque e) multi-purpose workshop f) guard house (2 no.) g) busses and taxi wash bay bldg. h) petrol station i) vacuum facility j) pre-engineered Busses and Car parking facilities k) canteen l) services blocks 1. substation 2. generator room 3. tank yard and pump room	Main Consultant: Almana Design Consultants International Complete "in-house" design services i.e. Architectural, Structural, Mechanical, Electrical including Quantity Surveying Services (preparation of tender document) and supervision consultancy services.	Completed	QR. 34 M

Client's Name	Description of Project	Consultant's Involvement	Status of Project	Value of the Project
INDUSTRY AND AGRICULTURE				
QATAR STEEL COMPANY	<p>BAR STORAGE FACILITIES INCLUDING INTERNAL ROADS AND BOUNDARY WALL</p> <p>The work comprises of construction of Seven (5) Warehouses/Product Sheds with two 10T capacity overhead crane facility, Administrative Building, Electrical sub-station Building, Design of Roads, Truck Scale (Weigh Bridge) and Entrance and Exit Gate etc.</p>	<p>Main Consultant: <i>Almana Design Consultants International</i></p> <p>Complete "in-house" design of all services including Quantity Services (i.e. Architectural, Structural, Electrical, Mech. and HVAC).</p>	Completed	QR. 215 M

Previous & Current Projects

Health and Welfare			
YEAR	PROJECT	LOCATION	VALUE (QR)
1974	Educational Health Centre	Doha, Qatar	30.3M
1980	Allied Health Training	Rumailah, Doha, Qatar	70.0M
1983	50 Bed Hospital	Al Hofuf, Saudi Arabia	113.0M
1984	Proposed Clinic	Halul Clinic	2.0M
1989	Polyclinic	Doha, Qatar	7.0M
1993	Medical Clinic	Khalifa Stadium, Doha, Qatar	2.5M
1993	New Clinic & ELS-1 Quarters	Halul Island	6.0M
1997	Surgical Intensive Care Unit Building	Doha, Qatar	1.8M
1997	Urban Health Centre	Umm Said, Qatar	6.8M
1998-99	Central Laboratories & Medical Commission Buildings	Doha, Qatar	19.5M
1998-99	Extension/Modification to Dental Clinic Laboratory at R.A.A.	Ras Abu Aboud, Qatar	1.5M
1999	Rumailah Hospital New M.R.I. Radiology Department	HMC Compound, Doha	1.3M
2000	Frozen Blood Bank Project	HMC Compound, Doha	1.4M
2000	New Central Airconditioning Plant for 76 Bed Ward Unit Block Extension and Operation Theatre	HMC Compound	0.9M
2000	Laboratory Department Expansion and Remodelling Project	HMC Compound	1.3M
2001	Out-patient Department – Endoscopy & New Patient Pharmacy Unit	HMC Compound	3.5M
2001	Intensive Care Unit in CSSD	HMC Compound	2.4M
2001	HMC Centre for Correction of Facila Deformities (Cranio-macillofacial Out-patient)	HMC Compound	3.3M
2001-02	New Al Gharafa Health Clinic	Al Gharafa	5.0M
2001-02	Orthopaedic/Trauma Centre for HMC	HMC Compound	25.5M
2002	General Dentistry at OPD Annex	HMC Compound	
2001-03	Cardiology Unit	HMC Compound	100M
2001-03	Supervision of Northern Area Hospital Nurses Accommodation	Al Khor	36M
2002-03	Development of M.I.C.U.	HMC Compound	
2005	3 No. PHC Health Centres for HMC	Al Jumailiya, Al Ghuwairiyah & Al Karaana	20.0M
2005	3 No. Health Centres for HMC	Abu Nakhla, Ain Khalid & Al Muraikh	8.5M
2005	Expansion of 2 No. PHC Health Centre	Abu Baker & Umm Salal	10.5M
2007	2 No. PHC Health Centres	Al Roda & Alkheesa	20M
2007	Design of Fire Sprinkler System for all Areas of Northern Area Hospital	Al Khor	1.5M
2007	Primary Healthcare Centres at Al Roda & Al Kheesa	Al Roda & Al Kheesa	46M

"A" Grade

آيه. دي. سي. آي.
A.D.C.i.

ALMANA
DESIGN CONSULTANTS INTERNATIONAL
المانع للتصاميم والاستشارات العالمية

Previous & Current Projects

Industry and Agriculture

YEAR	PROJECT	LOCATION	VALUE (QR)
1974	Minor Works	Doha, Qatar	0.5M
1980	Extension to Qatar National Park	Shahaniyah, Qatar	2.6M
1981	Soft Drinks Factory	Salwa Industrial Estate, Doha, Qatar	11.8M
1982	Central Store	Doha, Qatar	8.1M
1982	Cold Store	Doha, Qatar	7.05M
1984	Machine Shop	Doha, Qatar	0.69M
1990	Doha Fair and Exhibition Centre	West Bay, Doha, Qatar	37.0M
1992	Alteration and Modification to Existing Installation	Umm Bab, Qatar	10.0M
1993	Modernization of Product Handling System	Mesaieed, Qatar	9.0M
1995	Expansion of Rolling Mill	Mesaieed, Qatar	40.0M
1996-98	Steel Making Facilities and Installation of Electric Arc Furnace	Mesaieed, Qatar	60.5M
1998	Store House & Labour Accommodation	Industrial Area	5.5M
1998	Factory & Stores	Industrial Area	13.5M
1998	Foundation of Scale PIT & C.C. Machine	Mesaieed, Qatar	28.5M
1999	Mic Port Control Control Tower Complex & Workshop	Mesaieed, Qatar	5.8M
1999/01	Upgrading of Ports at Al Ruwais & Emiri Jetty	Al Ruwais	
2000/1	Qatar Hazardous Waste Treatment Plant Centre	Mesaieed, Qatar	
2001	Cable Bridge Work in DR Plant	Mesaieed, Qatar	10.5M
2001	Design of Fresh Water Tank	Mesaieed, Qatar	2.5M
2001	Miscellaneous Parking/ Access Building Projects	Ras Laffan	
2001/2	Design, Engineering and Preparation of Valve Workshop	Mesaieed	5.3M
2001/2	Upgrading of 33kva Substation	Mesaieed	
2002	Equipment Washdown Area (Fmp-0234) and Resurface of Granulator Gravelled Area (Fmp-0240)	Mesaieed	
2002	RasGas Laboratory Expansion Feed	Ras Laffan	
2003	Construction of Locker Room Building & Laboratory Extension	Ras Laffan	
2004	Workshop Expansion	Mesaieed	12M
2006	HID Lamp Factory	New Industrial Area	7M
2006	Design of Compressor Foundation and Related Structural Steelworks	Mesaieed	3.0M
2006/07	Scaffolding Factory and Offices	New Industrial Area	7M

"A" Grade

أيه. دي. سي. أي.
A.D.C.i.

ALMANA
DESIGN CONSULTANTS INTERNATIONAL
المانع للتصاميم والاستشارات العالمية

Previous & Current Projects

Industry and Agriculture

YEAR	PROJECT	LOCATION	VALUE (QR)
2007	Verification of Design Works	Mesaieed	
2007	Detailed Engineering Works for Acid Gas Cooler	Mesaieed	
2007	Development of Central Nursery	Abu Hamour	

Communication

YEAR	PROJECT	LOCATION	VALUE (QR)
1979	Doha, Qatar	Doha, Qatar	1.3M
1982	Extensions to T.V. Studios	Doha, Qatar	10.6M
1991	2 Nos. 20,000 Line Exchange Buildings	Wakrah, West Bay, Doha, Qatar	7.5M
1992	20,000 Line Exchange Buildings	Mesaieed, Qatar	3.0M
1994	20,000 Line Exchange Buildings	Al Kharitiyat, Qatar	3.0M
2005-6	Doha Asian Games Broadcasting Facilities – Phase I & Phase II	West Bay, Doha	

Sports, Leisure and Landscape

YEAR	PROJECT	LOCATION	VALUE (QR)
1975	Dolphinarium and Shark Tanks-limited Competition	Qatar National Museum, Doha	15.0M
1982	Marina Works and Alterations to The Doha Club	Doha, Qatar	3.4M
1982	Qatar National Theatre	Doha, Qatar	4.0M
1982	Sports Complex for Doha Club	Doha, Qatar	13.7M
1983	GCC Conference Centre	Doha, Qatar	40.0M
1983	New Recreation Building at Doha Club	Doha, Qatar	4.2M
1984	New Al Jasrah Club	Doha, Qatar	21.0M
1984	Alterations to Staff Club - Phase I	Mesaieed, Qatar	2.5M
1984	Scenic Landscaping - Phase I	Mesaieed, Qatar	8.5M
1984	Landscaping to Mosque	Wakrah, Qatar	1.5M
1985	Alterations to Staff Club - Phase II	Mesaieed, Qatar	1.7M
1985	Landscaping of Roads	Rayyan, Qatar	10.0M
1987	Stables, Tennis Court Fitness Centre, Swimming Pool & Landscaping at Farmhouse	Umm Qarn, Qatar	12.0M
1987	Roundabouts Landscaping	Rayyan, Qatar	0.8M
1987	Renovation of Olympic Sports Hall at Khalifa Stadium	Doha, Qatar	5.0 M
1987	Stables for H.H. the Emir at New Peninsular Development	Doha, Qatar	7.0M
1987	Animal Shelters at New Peninsular Development	Doha, Qatar	15.0M
1987	Refurbishment of The Palm Coffee Area	Doha, Qatar	2.5M
1988	North Corniche Park State Plaza Landscaping	Doha, Qatar	
1989	Sports Facilities for Pakistan Education Centre	Doha, Qatar	1.2M
1989	Landscaping at Pakistan Education Centre	Doha, Qatar	0.5 M
1989	Race and Equestrian Club	Rayyan, Qatar	80.3 M
1990	Landscaping at Qatar National Bank	Doha, Qatar	1.5M
1990	Enchancement of Roundabout Elements	Doha, Qatar	1.5M
1990	Demolishing and Reconstructing of Khalifa Stadium	Rayyan, Qatar	20.0M

"A" Grade

آيه. دي. سي. آي.
A.D.C.i.

ALMANA
DESIGN CONSULTANTS INTERNATIONAL
المانع للتصاميم والاستشارات العالمية

Previous & Current Projects

Sports, Leisure and Landscape

YEAR	PROJECT	LOCATION	VALUE (QR)
1990	Doha Amusement Park (Aladdin's Kingdom)	West Bay, Qatar	45.0M
1993	Recreational & Beach Facilities	Doha Sheraton Hotel	
1993	Landscaping Design Mesaieed Beach Resort and Palm Tree Island Interior Design Umm Said Beach and Palm Tree Island	Mesaieed, Qatar	
1993	Interior Design Umm Said Beach and Palm Tree Island	Mesaieed, Qatar	
1997/8	Conversion of Quash Courts and Toilets to a Gym	Mesaieed, Qatar	2.3M
2004/5	Renovation to Main Building – Doha Marriott Gulf Hotel (Civil Works & Interior Design Services)	Ras Abu Aboud	50M
2005/6	Renovation of Kitchens of Doha Sheraton Hotel & Resort	West Bay	30M
2007	Parks and Playground for Seven Sites at Al Wakrah	Al Wakrah	4.5M
2007	Parks and Playground at Al Shamal, Al Dayen & Al Khor	Al Shamal, Al Khor & Al Dayen	6.5M
2007	Development of Al Banush Club	Mesaieed	45M

Interior Design

YEAR	PROJECT	LOCATION	VALUE (QR)
1988	Office Interior Design	West Bay, Doha	25.0M
1989	Bachelor's Accommodation	Mesaieed, Qatar	8.5M
1990	Preparation of Doha Sheraton Hotel to Host the 1990 GCC Conference	Sheraton Hotel, Doha, Qatar	20.5M
1993	Sports Medical Clinic	Khalifa Stadium Doha, Qatar	2.5M
1996/7	Interior Design of 5th & 6th Floor	Doha, Qatar	4.0M
2002	Interior Design of New Office Headquarters	Corniche, Qatar	1.5M
2003	Interior Design of Two Storey New Office Building	Abu Hamour	1.5M
2003	Supervision of Interior Design of Offices in Amiri Diwan Palace	Doha	2.0M
2003/4	Interior Design – Outfitting and Decoration & Construction Supervision	Al Saad	1.35M
2004/5	Interior Design – Outfitting and Decoration & Construction Supervision – Doha Marriott Gulf Hotel	Ras Abu Aboud	19M

Offices and Commercial

YEAR	PROJECT	LOCATION	VALUE (QR)
1974	Hotel & Office Complex	West Bay, Doha	200.0M
1975	Canteen and Terminal Buildings	Mesaieed, Qatar	7.2M
1980	Renovations and New Ladies Branch	Doha, Qatar	1.8M
1980	Commercial/Residential Development	West Bay, Doha	77.6M
1981	Sanitation Department Offices	Doha, Qatar	5.2 M
1981	Commercial/Residential Development	B Ring Road	32.0M
1984	Shopping Centre Development	Al Mura, Qatar	6.4M
1985	Layout of Offices	West Bay, Doha	6.5M
1985	Markets, Coffee Shops and Central Area Development	Al Khor, Qatar	6.7M
1986	Office Interior Design	West Bay, Doha	25.0M
1990	Preparation of Doha Sheraton Hotel to Host the 1990 GCC Conference	Sheraton Doha, West Bay	20.0 M
1990	Qatar Chamber of Commerce Building	Doha, Qatar	30.0M
1991	QAFCO New Administration Building Project	Mesaieed, Qatar	25.0M
1992	Acolid Office Development, Corniche	Corniche, Doha	35M

"A" Grade

أ.هـ. د. سي. أي.
A.D.C.i.

ALMANA
DESIGN CONSULTANTS INTERNATIONAL
المانع للتصاميم والاستشارات العالمية

Previous & Current Projects

Offices and Commercial

YEAR	PROJECT	LOCATION	VALUE (QR)
1992	Office Building Complex	Corniche, Doha	35M
1994	Shops and Offices	Al Jasrah, Doha	3.5M
1994	Shops and Flats	Al Jasrah, Doha	3.5M
1994	Shops And Flats	Musheirib, Doha	3.5M
1994	Petrol Station	Najma, Doha	5.5M
1994	Qatar National Bank	Appointed as Bank's Consultant Representative for a Period of 3 Years	
1995	Shops and Flats	Al Mogleena	3.5 M
1995	Shops and Flats	Al Ghanem Jadid	8.0M
1995/6	Conversion of Existing Shop Buildings to QNB Branch Offices	Al Saad & Industrial Area	1.6M
1995/6	4 No. Bank Branches	Al Rayyan, Mesaieed, Al Khor & Al Shamal	13.0M
1996/7	Extension to Main Office Building	Mesaieed, Qatar	6.5M
1996/7	Administration Offices for Meteorological Department	Al Najjah, Qatar	1.3M
1997	Extension to Ford Showroom	Airport Road, Doha	3.5M
1997/8	Showroom Tower for United Cars	Airport Road, Doha	15.5m
1999	Multi-storey Offices & Showroom Complex	Al Saad Area	
2000	Human Resources Building	Ras Abu Aboud	10.8M
2000/3	Commercial Development + Pent House	Grand Hamad Avenue, Doha	21.5M
2003	Two Storey Office Building	Abu Samra	10.2M
2003	Extension of One Additional Floor to HESQ Department Building	Mesaieed	0.8M
2006-07	Construction of Al Khor Office Building for Al Khor Municipality	Al Khor	5.5M
2007	13 Storey Commercial/Office Building for Mr. Kamal Ali Saleh	Umm Ghuwalina	169M

Residential

YEAR	PROJECT	LOCATION	VALUE (QR)
1974	Apartment Building	Doha, Qatar	5M
1974	Luxury Villa	Doha, Qatar	4.5M
1975	Beach Residence	Al Khobar, Saudi Arabia	5.5M
1981	Renovations of Guest Palace	Doha, Qatar	2.5M
1982	Development of 64 Villas	D Ring Road, Doha, Qatar	32M
1982	Development of 37 Villas	Salwa Road, Doha, Qatar	20.2M
1982	Intermediate Staff Housing of 96 Flats in 6 Blocks	Mesaieed, Qatar	35M
1982	Farmhouse Extensions/Renovation & New Majlis Building for H.H. Sheikh Khalifa Bin Hamad Al Thani	Al Sulaimi, Qatar	30M
1982	Two Apartment Buildings	Doha, Qatar	10 M
1983	Extensions to Villa	Doha, Qatar	25M
1983	Bachelor Accommodation Limited Competition		12M
1983	Major Renovations to Villa for H.H. Sheikh Khalifa Bin Hamad Al Thani	Old Rayyan, Qatar	20M
1984	Additions to Beach House	Al Khor, Qatar	10.0M
1984	Student's Accommodation	Al Gharafa, Qatar	1.18M
1985	Beach House for H.E. Sheikh Hamad Bin Jassim Bin Jabor Al Thani	Al Khor, Qata	20.0M

"A" Grade

آيه. دي. سي. آي.
A.D.C.i.

ALMANA
DESIGN CONSULTANTS INTERNATIONAL
المانع للتصاميم والاستشارات العالمية

Previous & Current Projects

Residential

YEAR	PROJECT	LOCATION	VALUE (QR)
1985	Palace Extension and Renovations for H.E. Sheikh Suhaim Al Thani	Doha, Qatar	30.0M
1985	Farmhouse for H.H. Sheikh Abdulla Bin Khalifa Al Thani	Umm Qarn, Qatar	45.0M
1985	Ladies Majlis, Rayyan Palace Complex for H.H. Sheikh Abdulla Bin Khalifa Al Thani	Al Rayyan, Qatar	19.0M
1986	Private Villa	Doha, Qatar	5.0M
1986	Majlis Renovations and Extensions for H.E. Sheikh Umm Jassim Bin Khalifa Al Thani	Al Rayyan, Qatar	15.0M
1987	Private Villa	West Bay, Doha	8.5M
1988	Palace	Umm Salal, Qatar	14.5M
1988	Housing Development	Rayyan, Qatar	2.0 M
1989	Majlis Extension	Doha, Qatar	0.5 M
1989	Bachelor's Accommodation	Mesaieed, Qatar	8.5M
1989	Housing Development	Rayyan, Qatar	25.0M
1990	Villa for Sheikh Abdul Rehman	Doha, Qatar	6.5M
1993	2 No. Villas for Dhafi Al Marri	Doha, Qatar	6.5M
1993	Villa Development	Gharafa, Doha	3.0M
1995	Villa Development	Doha, Qatar	5.0M
1995	Villa Development	Umm Salal, Qatar	5.5M
1995	Villa Development	Doha, Qatar	2.3M
1996/7	Bachelor Accommodation	Umm Bab, Qatar	3.0M
1998	Villa Development	Doha, Qatar	3.5M
1998/99	Villa Development	Doha, Qatar	9.5M
1998/00	Villa Development	Doha, Qatar	2.1M
1999/00	Multi-storey Building for 3 Bedrooms	Doha, Qatar	12.0M
1999/00	Residential Palace	Umm Salal, Qatar	12.5M
1999/00	Villa Development	Dafna, Qatar	2.3M
1999/00	Villa Development	Doha, Qatar	3.5M
2001	Villa Development	Doha, Qatar	4.5M
2001-02	4 Nos. Villas Development	Al Rayyan, Qatar & Al Najjah	16.5M
2003	Lifts Installation to Bachelor Accommodation	Mesaieed	1.2M
2003	Renovation to Guest Accommodation	Mesaieed	1.5M
2003	Report on Structural Stability of 21 QP Villas	Mesaieed	3.5M
2005	Guards Residences for PEO	Doha	75M
2006	Labour Accommodation for FBA Group	Industrial Area	9M
2006/07	Dukhan Housing Project – Phase VIII for QP	Dukhan	
2007	2 No. Apartments Buildings	Umm Ghuwalina	32M

Government and Military

YEAR	PROJECT	LOCATION	VALUE (QR)
1976	GHQ Offices for Qatar Armed Forces	Rumailah Fort, Doha, Qatar	10M
1976	Administrative and Laboratories Building	Boys College, Doha, Qatar	6.55M
1976	Alterations to Amiri Diwan	Doha, Qatar	1.2M
1979	Guards Accommodation for Qatar Armed Forces	Rumailah Fort, Doha, Qatar	1.5M
1980	Renovations to VIP Area	Doha, Qatar	1.1M
1981	Renovation of Minister's Suite	Doha, Qatar	3.2M

"A" Grade

أيه. دي. سي. أي.
A.D.C.i.

ALMANA
DESIGN CONSULTANTS INTERNATIONAL
المانع للتصاميم والاستشارات العالمية

Previous & Current Projects

Government and Military

YEAR	PROJECT	LOCATION	VALUE (QR)
1981	Sanitation Department Office	Doha, Qatar	5.2M
1984	Lift Installation for Qatar Armed Forces	GHQ Offices	1.2M
1984	Conversion/renovations of VIP Villas Into Offices	Doha, Qatar	32M
1985	Doha Palace Project – Ancillary Building	Doha, Qatar	15.5m
1985	Doha Palace Project – Military Barracks	Doha, Qatar	10.5M
1986	Security Works, Diwan Amiri and Rayyan Palace	Doha and Rayyan Palace	9.8M
1986	Renovations to Offices for H.H. the Emir	Rayyan Palace, Qatar	10.3M
1986	VIP Villas Extensions	Doha, Qatar	5.5M
1987	Office Headquarters Building, Doha Air Base	Doha, Qatar	2.0M
1987	Additional Facilities to VIP Villas, Games Hall, Pistol Range & Workshop	Doha, Qatar	35M
1987	4 No. Barrack Blocks at Doha Air Base	Doha Air Base	10.5M
1990	Storage Facility	Doha, Qatar	1.5 M
1991	Al-Udeid Project – Phase I	Sailiyah, Qatar	200M
1992	Al-Udeid Project – Phase II (Residential Area & Mosque)	Sailiyah, Qatar	125M
2002	Laboratory Extension Building	Ras Laffan, Qatar	
2002	Laboratry and Locker Room Buildings Extension	Ras Laffan, Qatar	6.5M
2002	Design of Carpark at Diwan Amiri Courtyard	Doha, Qatar	0.8M
2006/7	Development of Central Nursery – Phase 2	Doha, Qatar	

Education

YEAR	PROJECT	LOCATION	VALUE (QR)
1980	Lecture Hall Building – Girls College	Doha, Qatar	3.5M
1980	Administrative and Laboratories Building – Boys College	Doha, Qatar	6.55M
1981	Science and Applied Science Research Centre	Doha, Qatar	65M
1981	Classroom Buildings – Boys and Girls Colleges	Doha, Qatar	6.57M
1984	National Library - Book Stores	Doha, Qata	1.5 M
1985	Relocation of Modular Buildings	Doha, Qatar	14.0M
1992	Kindergarten Schools	Al Montaza Area	3.0M
1995	Reconstruction of Norwegian School	Mesaieed, Qatar	2.8M

“A” Grade

أيه. دي. سي. أي.
A.D.C.i.

ALMANA
DESIGN CONSULTANTS INTERNATIONAL
المانع للتصاميم والاستشارات العالمية

COMPANY LICENSE / REGISTRATION

وزارة البلدية والتخطيط العمراني

لجنة قبول المهندسين ومكاتب الاستشارات الهندسية

وثيقة قيد في سجل مكاتب الاستشارات الهندسية المحلية

الجنسية : قطرية

اسم المرخص له : روضة عبدالله خالد محمد المانع

الجنسية : سودانى

المدير المسئول : المهندس/ ادريس احمد مختار الامين

تاريخ الانتهاء: ٢٠١٤ / ٠٥ / ٠٨

تاريخ قيد المدير : ٢٠٠٦ / ٠٥ / ٠٩

رقم قيد المدير المسئول : ٤٥٤

ص ب : ٣٣٧٩

رقم هاتف المدير المسئول : ٥٥٣١٨٠١٠

رقم قيد المكتب : ٦٣ / م

فئة المكتب : الأولى

اسم المكتب : المانع للتصاميم والاستشارات العالمية

التخصصات : هندسة معمارية / هندسة مدنية / هندسة ميكانيكية / هندسة كهربائية

تاريخ الانتهاء: ٢٠١٥ / ٠١ / ١٤

تاريخ القيد : ٢٠٠٧ / ٠١ / ١٥

شارع : ٣٤٠ - طريق سلوى

موقع المكتب : ٥٦ - المعمورة

ملك : ناصر فالح ال ثاني

مقار رقم : ع - ٥

البريد الالكتروني: adci@qatar.net.qa

الفاكس : ٤٤٦٩٩٠٢٢ الهاتف : ٤٤٦٩٩٠٣٣

محضر اللجنة رقم (٣١٤) بتاريخ ٢٠١٣/٠٢/٠٦ م.

م / خالد عبدالرحمن ال سعد

رئيس اللجنة

الدوحة في : ٢٩ / ٠١ / ٢٠١٣ م

* تنبيه : استناد للمادة رقم (١١) من القانون رقم ٢٠٠٥/١٩ يجب تجديد القيد خلال ٣٠ يوماً من انتهائه ويترتب على عدم التجديد شطب الاسم من السجل



مجلس المهندسين ومكاتب الاستشارات الهندسية
دولة الكويت

لجنة قبول المهندسين ومكاتب الاستشارات الهندسية

لجنة قبول المهندسين ومكاتب الاستشارات الهندسية

رقم قيد : ٦٣ / م

تاريخ القيد : ٢٠٠٧/٠١/١٥ م

شهادة قيد في سجل مكاتب الاستشارات الهندسية المحلية

يرخص للسادة : المانع للتصاميم والاستشارات العالمية بالفئة : الأولى

هندسة ميكانيكية / هندسة معمارية

هندسة كهربائية / هندسة مدنية

بمزاولة مهنة الهندسة بالاختصاصات التالية:

٢٠١٥/٠١/١٤ م

سارية حتى تاريخ :

م / خالد عبد الرحمن آل سعد
رئيس اللجنة
يعتمد

لل

صلاية في : ٢٠١٣/٠١/٢٩ م

شبه - اسئلة المذخر رقم (١١) من القانون رقم (٢٠٠٥/١٤) يجب تحيد القيد خلال (٣٠) لائون يوما من انتهاء وتوقف على عدم التحيد غلب الاسم من السجل
تعتبر هذه الشهادة ترخيصا وفق احكام القانون رقم (١٩) لسنة ٢٠٠٥ بتنظيم مزاولة المهنة الهندسية





رخصة تجارية

مكتب استشارات هندسيه

رقم الرخصة: 10936

رقم الطلب: 2013/2186

الجنسية: قطري

البطاقة الشخصية: 28563400881
اسم المرخص له: روضه عبدالله خالد محمد المانع

الجنسية: سوداني

البطاقة الشخصية: 26073600965
المدير المسؤول: ادريس احمد مختار الامين

الاسم التجاري: المانع للتصاميم والاستشارات العالميه

نوع العمل: مكتب استشارات هندسيه تخصص (هندسه مدنيه و هندسه معماريه و هندسه كهربائيه و هندسه ميكانيكيه) درجه اولى

شارع: 340 - طريق سلوى

موقع المحل: 56 - المعمورة

ملك: ناصر فالح ال ثاني

عقار رقم: 5-ع

صدرت هذه الرخصة بموجب القانون رقم 3 لسنة 1975 وعلى المرخص له مراعاة الإلتزام بأحكام القانون ولوائحه التنفيذية بالإضافة الى الشروط الخاصة بالتراخيص ومنها ضرورة تجديدها في الموعد المحدد وإخطار الإدارة فور حدوث أية تعديلات في البيانات اعلاه.

1111111-0

تاريخ الاصدار: 2013-02-14

تاريخ الإنتهاء: 2015-01-14

مدير إدارة التسجيل والتراخيص التجارية



نوع القطاع : خاص

نوع النشاط :

تاريخ الانتهاء : 2015-01-14

بطاقة المنشأة

رقم المنشأة : 10 2752 00

Org. Name: ALMANA DESIGN CON.IN

اسم المنشأة : المانع للتصاميم والاستشارات العالمية

المفوضين بالتوقيع

م	الرقم الشخصي	الاسم	انتهاء الصلاحية	التوقيع
1	25163400360	عبدالله خالد محمد المانع	2015-01-14	
2	28563400881	روضه عبدالله خالد محمد المانع	2015-01-14	

تاريخ الطباعة : 2013-02-18

ملاحظات :

ملاحظة : هذه البطاقة صالحة فقط بوجود ختم وتوقيع الإدارة عليها

<p>ختم المنشأة</p> <p>الإستعمال الرسمي :</p> <p>مدير إدارة شؤون الوافدين</p>	<p><u>التعليمات :</u></p> <p>١- يحق للإدارة العامة لجوازات المنافذ وشؤون الوافدين إلغاء هذه البطاقة بدون إذن مسبق.</p> <p>٢- تصبح هذه البطاقة ملغاة إذا وجد بها أي كشط أو شطب.</p> <p>٣- إشعار الإدارة العامة لجوازات المنافذ وشؤون الوافدين عند تغيير أو إلغاء التوقيع والختم وتعديل المسمى التجاري.</p> <p>٤- في حالة البيع والشراء تسلم للمالك.</p> <p>٥- في حالة فقدان البطاقة يبلغ أقرب مركز للشرطة.</p>
--	---

Certificate of License

Be it known that

Almana Design Consultants International

is a registered GSAS/QSAS SERVICE PROVIDER

in good standing with

Gulf Organisation for Research & Development
and agrees to follow standards & protocols set forth by GORD for

Scheme I – Building Typologies
Scheme II – Neighborhoods
Scheme IV – Railways

License expires March 17, 2014

License No. SP0158



Dr. Yousef AlHorr
Founding Chairman



Gulf Organisation for
Research & Development
المنظمة الخليجية للبحث والتطوير



المنظومة العالمية لتقييم الاستدامة
Global Sustainability Assessment System



QATAR SUSTAINABILITY ASSESSMENT SYSTEM

ISO CERTIFICATE



Certificate Of Registration

QUALITY MANAGEMENT SYSTEM

This is to Certify that the QMS of:

AL MANA DESIGN CONSULTANT INT'L.

Address:

Midmac R/A, P.O.BOX 3379, Doha, Qatar.

ANZSIC CODE: 7820

Has been assessed and found to meet the requirements of:

ISO 9001: 2008

Clause 7 permissible Exclusions: Nil

The certificate is valid for the following scope :

Consulting Architects, Engineering & Project Management.

Certificate Number: QAT/QMS/00127

Issue no.: 01

Date of approval : 15.06.2013

Revision no: nil

Valid until : 14.06.2016

Revision date : nil



Surveillance Audit 1st Year

Managing Director



Surveillance Audit 2nd year



ACC.No.M4151008IK

MS CERTIFICATION SERVICES PVT. LTD.

Web: www.ms certification.org

The Accreditation Body is Joint Accreditation System of Australia and New Zealand
(JAS-ANZ), Canberra, Australia.

The validity of this certificate can be verified at www.ms certification.org
The Certificate is Valid Only if the Annual Surveillance Mark is Signed by Auditor on Original.

F60.rev.03



CERTIFICATES



هيئة الاشغال العامة

PUBLIC WORKS AUTHORITY

شهادة الانجاز النهائية لاتفاقية خدمات استشارية CERTIFICATE OF COMPLETION FOR PROFESSIONAL SERVICE AGREEMENT

Contract Title:	PRE CONTRACT CONSULTANCY DESIGN & QUANTITY SURVEYING SERVICES FOR GENERAL CLEANING PROJECTS COMPOUND COMPLEX AT MEASAMEER (BA07-08/D/002/S)	اسم الاتفاقية :
Contract No:	P 2007/031	رقم الاتفاقية :
Budget Ref:	1403376	رقم بند الموازنة :
Consultant:	ALMANA DESIGN CONSULTANT, INT'L.	المقاول :

Contract date for Completion:	31/12/2008	تاريخ الإنجاز في الاتفاقية :
Actual date of Completion:	19/02/2009	تاريخ الإنجاز الفعلي :

أشهد بأن جميع الخدمات المذكورة في الاتفاقية المرفقة قد تم انجازها من قبل الاستشاري.
و أوصي بالإفراج عن الضمانات البنكية بهذه الاتفاقية حيث أن الاستشاري قد قام بتنفيذ جميع التزاماته.

I certify that the Consultancy Services are finished by the Consultant as per the Commitment P2007/031,

We recommend the Consultant was all agreed for the settlement and discharged all the obligations under the terms of the agreement, all bonds held in accordance with the terms of the agreement be now released to close the contract.

Engineer's Representative:

Signature: 

Name: Santos Quigao, Jr.

Date: 14-10-2012

Design Engineer /
Building Affairs

The Engineer:

Signature: 

Name: LAHDAN AL MOHANNADI

Date:

Manager of Design Department

Distribution

Copy to: Design Department

Copy to: Contract Department

Copy to: Engineering Department

Copy to: Project File

<input type="checkbox"/>	المهندس
<input type="checkbox"/>	المراقب
<input type="checkbox"/>	المهندس
<input type="checkbox"/>	مكتب المشروع

المهندس

المراقب

المهندس

مكتب المشروع

SHEIKH MANSOUR BIN JABR AL-THANI

CERTIFICATE OF COMPLETION

**PROJECT TITLE : COMMERCIAL BUILDING AT SALATA
(3B + G + M +14)**

**NAME OF SUB-CONSULTANT : ALMANA DESIGN CONSULTANTS
INTERNATIONAL**

The Client hereby confirms that the MEP Services including all Local Authorities approvals under the said CONTRACT have been performed and satisfactorily completed by Almana Design Consultants International in accordance with the Contract and within the completion date in respect of Commercial Building at Salata (3B+G+M+14).

SHEIKH MANSOUR BIN JABR AL-THANI

Signature : _____

Date : February 2013

SHEIKH MANSOUR BIN JABR AL-THANI

CERTIFICATE OF COMPLETION

PROJECT TITLE : TWIN TOWERS AT MARINA DISTRICT, LUSAIL

**NAME OF SUB-CONSULTANT : ALMANA DESIGN CONSULTANTS
INTERNATIONAL**

The Client hereby confirms that the MEP Services and QSAS approval including all Local Authorities approvals under the said CONTRACT have been performed and satisfactorily completed by Almana Design Consultants International in accordance with the Contract and within the completion date in respect of Design of Twin Towers at Marina District, Lusail.

SHEIKH MANSOUR BIN JABR AL-THANI

Signature : 

Date : FEBRUARY 2013

SHEIKH MANSOUR BIN JABR AL-THANI

CERTIFICATE OF COMPLETION

**PROJECT TITLE : COMMERCIAL BUILDING (3B + G + 7)
NEAR CENTER POINT**

**NAME OF SUB-CONSULTANT : ALMANA DESIGN CONSULTANTS
INTERNATIONAL**

The Client hereby confirms that the MEP Services including all Local Authorities approvals under the said CONTRACT have been performed and satisfactorily completed by Almana Design Consultants International in accordance with the Contract and within the completion date in respect of Commercial Building (3B+G+7) Near Center Point.

SHEIKH MANSOUR BIN JABR AL-THANI

Signature : _____

Date : March 2013

STAFF CV's

CONSULTANT FIRM : ALMANA DESIGN CONSULTANTS INTERNATIONAL

Name of Staff Member : IDRIS AHMED MUKHTAR, PMP

Current Position, Title and Responsibility : Project Manager/Coordinator
Involved in the Structural Concrete/Steel design, specification and preparation of drawings.

Proposed Position on the Project : Project Engineer (Structural/Civil)

Nationality : Sudanese

Date of Birth : October 28, 1960

Academic Qualifications

Name/Location of Institution : University of Khartoum / Sudan

Academic Degrees with Dates : B.Sc. Honor in Civil Engineering – 1986

Professional Affiliations : Project Management Professional

Project Responsibilities : Overall Office Project Management for elapsed and ongoing projects – Pre & Post Contract

Experience Relevant to this Project In addition to overall office responsibilities as office Technical Manager, here are direct hands-on experience for projects handled directly.

- Structural Design / Project Management of the following projects:
- : Cardiology Centre Unit (Medical Tower)
- : Preparation of Valve workshop for QAFCO
- : Structural Design and Supervision of Mannai Reception Building for Mannai Corporation at Industrial Area.

- : Warehouse and Labour Accommodation for Private Engineering Office
- : New Logistic Facility (Warehouse & Labour Accommodation) at Industrial Area for M/s Agility

Employment Record

- : ALMANA DESIGN CONSULTANTS INTERNATIONAL
Doha, Qatar
Project Manager / Coordinator
2000 to Present **(10 Years)**
- : SUNRISE-COMPUTERS
Doha, Qatar
AutoDesk's Certified Instructor for AutoCAD,
Instructor for Ms Project
1999-2000 **(1 Year)**
- : WELFARE ASSOCIATION
UAE,
1996-1999 **(3 Years)**
- : AL SHAHID CONSTRUCTION COMPANY
Sudan
Head of Building Department
1993-1996 **(3 Years)**
- : AL MADINA COMPANY
Libya
Structural and Supervising Engineer
1990-1992 **(2 Years)**
- : NATIONAL INSURANCE FORUM
Libya
Supervising Engineer
1988-1990 **(2 Years)**
- : GARTAJ ENGINEERING COMPANY
Sudan
Structural and Supervising Engineer
1986-1987 **(1 Year)**

CONSULTANT FIRM : ALMANA DESIGN CONSULTANTS INTERNATIONAL

Name of Staff Member : LUIS L. RAYMUNDO

Current Position, Title and Responsibility : Project Manager / Design Architect
Acted as Project Manager/Design Architect, interacting with clients, attending progress meetings, fully responsible in design and inter-department coordination.

Proposed Position on the Project : Sr. Design Architect

Nationality : Filipino

Date of Birth : October 12, 1958

Academic Qualifications

Name/Location of Institution : Manuel L. Quezon University – Manila, Philippines

Academic Degrees with Dates : Bachelor of Science in Architecture – 1984

Professional Affiliations : None

Project Responsibilities : Senior Design Architect

Experience Relevant to this Project : Responsible to the design, coordination of all disciplines, inter-acting with Clients to resolve design issues and Supervision/Project Management of the following Government projects including successful completion of some of the prestigious projects for various Qatar individual Clients.

: Arc Furnace – Work with Mannesman De Mag Germany – Qatar Steel Co.

: New Logistic Facility (Warehouse & Labour Accommodation) at Industrial Area for M/s Agility

- : ARC Furnace for Qatar Steel Company
- : HID Lamp Factory at Industrial Area for Al Shams Lighting Technologies
- : Manweir Workshop Expansion Project at Salwa – 1
- : PERI Factory at Industrial Area
- : Supervision Consultancy for Multi-Purpose Workshop (MOWASALAT)

Employment Record

- : ALMANA DESIGN CONSULTANTS INTERNATIONAL
Doha, Qatar
Project Manager
October 1984 to Present **(26 Years)**
- : SELF EMPLOYED
March 1983 to October 1984 **(1 Year)**
- : ROMANES ASSOCIATES
Manila, Philippines
Part-time Designer / Site Supervisor
January 1983 to March 1984 **(1 Year)**
- : JRM CONSTRUCTION
Manila, Philippines
Job Captain
December 1982 to January 1983 **(1 Year)**

CONSULTANT FIRM : ALMANA DESIGN CONSULTANTS INTERNATIONAL

Name of Staff Member : ASITHA J. PATHIRAGE

Current Position, Title and Responsibility : Projects Manager / Senior Architect

ADCi is a prime Construction Consultancy Company in Qatar that serves State Sector client organizations as well as the Private sector. Projects Manager/Senior Architect position involves management of consultancy services provided by the company to the total satisfaction of its clients. This includes review and coordination of the work with client and other consultants involved as well. This covers the guidance and supervision of the work of architects, engineers, drawing office staff and site supervisory staff as well, in meeting the standards required in the service provided. It also involves work related to bidding for new projects, negotiations, meetings and discussions with client organization etc. This position also covers responsibilities in obtaining statutory approvals for design proposals.

Mr. Pathirage also works as Project Manager for few projects that are under construction. The work mainly covers duties related to Contract administration, Monitoring, Review and Reporting on Project Performance, Project Planning, Scheduling and Progress, Supervision and Approval of materials and work for payment, to the Issue of final completion certificate. Conducting of regular site meetings, Coordination between Client organization, Contractors, Consultants and Site Supervisory staff are among the other works covered.

Proposed Position on the Project : Project Manager

Nationality : Sri Lankan

Date of Birth : October 13, 1948

Academic Qualifications

Name/Location of Institution : 1. The University of Sri Lanka / Katubedda Campus
Moratuwa, Sri Lanka

B.Sc. (Built Environment) Degree – February 1976

- : 2. University of Moratuwa, Sri Lanka, Department of Civil Engineering
Moratuwa, Sri Lanka

Post Graduate Diploma in Construction Project Management. (Two Year Full Time Course leading to P,G, Diploma and M.Sc.) – February 1997
- Professional Affiliations
- : Chartered Architect of the Sri Lanka Institute of Architects

Part I of the Royal Institute of British Architects

"A" Grade Consultant in Architecture and Project Management as certified by the UPDA of Qatar
- Project Responsibilities
- : It is the responsibility of the Project Manager to ensure that the project is successfully completed within the contract period, and within the allocated budget, to required quality standards, while ensuring the health safety and environmental standards are also maintained, to the total satisfaction of the client.

This will involve project planning, scheduling and the management of the contract. Monitoring, reviewing and reporting on project performance and progress is an essential part of the task. Conducting of regular meetings and coordination of work among all stake holders and approvals are other main responsibilities involved.
- Experience Relevant to this Project
- : **Mechanical Workshop for Mannai Corporation at Salwa Industrial Area**
Project Manager – Post Contract

This Project comprised of 3,000m² triple height steel workshop structures, for Mechanical Fabrication and Milling work, housing heavy duty lathe/milling machines, and two heavy gantry cranes along the length of the workshop. Heavy duty floors and five large double height roller shutters were other main features of the work in addition to required building services.
 - : **Pre-Contract Design and QS Services for Warehouse and Labour Accommodation at New Industrial Area, for Private Engineering Office**

The project comprised of warehouse complex covering a floor area of about 11,000m² with a double storey height and related office shop and accommodation buildings.

Warehouses were of pre-engineered steel structures while office shop and accommodation building covering 25,000m² were of concrete frame and block work construction. All Senior, Junior and Labour Accommodation buildings were of Ground + 2 Floor structures while office shop buildings was only Ground + 1 Floor.

Employment Record

- : **Total of 32 Years**
- : ALMANA DESIGN CONSULTANTS INTERNATIONAL
Doha, Qatar
Projects Manager / Senior Architect
December 2008 – Present **(1.25 Years)**
- : INSTITUTE FOR CONSTRUCTION TRAINING AND
DEVELOPMENT OF
SRI LANKA.
123, 'Savsiripaya', Wijerama Mawatha, Colombo 7,
Sri Lanka.
Chairman
Dec. 2007 to Nov. 2008 **(1 Year)**
- : STATE DEVELOPMENT AND CONSTRUCTION
CORPORATION OF SRI LANKA.
7, Borupana Road, Rathmalana . Sri Lanka.
Chairman
Sept. 2006 to Dec. 2007 **(1.25 Years)**
- : STATE ENGINEERING CORPORATION OF SRI LANKA.
CONSULTANCY DIVISION
P.O. Box 194, Colombo 2.
Senior Architect
Feb. 2002 to Aug. 2006 **(4 Years)**
- : STATE DEVELOPMENT AND CONSTRUCTION
CORPORATION OF SRI LANKA.
No.7,Borupana Road, Ratmalana,
Technical/Working Director
April 1995 to Jan. 2002 **(6.75 Years)**
- : STATE ENGINEERING CORPORATION OF SRI LANKA
CONSULTANCY DIVISION
P.O. Box 194, Colombo 2.
Senior Architect
Dec.1984 to April 1995 **(10.5 Years)**
- : JOHN R HARRIS ASSOCIATES,
ARCHITECTS, DESIGN AND PLANNING
CONSULTANTS
Ruwi, Sultanate of Oman.
Architect
May 1982 to Sept. 1984 **(2.3 Years)**
- : AUSCON CONSULTANTS
P.O. Box 5927,Ruwi
Sultanate of Oman.
Architect
March 1981 to May 1982 **(1.2 Years)**
- : CONSULTANCY DIVISION,
STATE ENGINEERING CORPORATION OF SRI LANKA,
P.O. Box 194, Colombo 2.
Architect
March 1978 to March 1981 **(3 Years)**

- : GOVERNMENT DEPARTMENT OF BUILDINGS,
COLOMBO.
Junior Architect
Oct. 1976 to March 1978 **(1.5 Years)**

- : DESIGN GROUP FIVE
CHARTERED ARCHITECTS, ENGINEERS AND
ENVIRONMENTAL CONSULTANTS,
30,Wijerama Mawatha, Colombo 7.
Trainee Architect
June 1976 to Oct. 1976 **(4 Months)**

CONSULTANT FIRM : ALMANA DESIGN CONSULTANTS INTERNATIONAL

Name of Staff Member : GERARDO SUAREZ GARALDE

Current Position, Title and Responsibility : Sr. Civil / Structural Design Engineer
Involved in the Structural Design and Preparation of Drawings

Proposed Position on the Project : Sr. Structural / Civil Design Engineer

Nationality : Filipino

Date of Birth : February 11, 1965

Academic Qualifications

Name/Location of Institution : University of the Cordilleras / Baguio, City, Philippines

Academic Degrees with Dates : Master of Science in Civil Engineering
(Major in Structural Engineering)
June 1999 – April 2002
: Bachelor of Science in Civil Engineering
June 1982 – October 1987
: Associate Geodetic Engineering – 1987

Professional Affiliations : Member Philippines Institute of Civil Engineers (PICE)
: Regular Member Association of Structural Engineers of the Phils. (ASEP)

Project Responsibilities : General Responsible for the preparation of structural analysis design report for reinforced concrete and structural steel structures.
: Preparation of Foundation Design Report for Pre-Engineered Building (PEB)

- : Preparation of Structural Specification for Reinforced Concrete and Structural Steel Structures
- : Involved in checking of structural drawings
- : Involved in Construction Project Management and Supervision

Experience Relevant to this Project

- : Design of 7 Facilities for Qatar Gas
 - 4 Nos. Warehouses
 - 2 Nos. Maintenance Workshops
 - Medical Center
 - Shutdown Village
 - Plant Gate and Security Guard House
 - LNG Jetty Loading Platform
 - Lifting Winch
- : Structural Design and Supervision of Manweir Workshop Extension (PEB) for Mannai Corporation at Industrial Area.
- : Structural Design and Supervision of Mannai Reception Building for Mannai Corporation at Industrial Area.
- : Structural Supervision of Medical Tower for Hamad Medical Corporation
- : Structural Supervision of HID Lamp Factory (PEB) at Industrial Area for Advanced Lighting Technologies (Al-Shams)
- : Structural Design of 2-units 300 KVA Transformer Housing at QAFCO
- : Structural Design of Central Nursery Phase 2 for PWA
- : Warehouse and Labour Accommodation for Private Engineering Office

Employment Record

- : ALMANA DESIGN CONSULTANTS INTERNATIONAL
Doha, Qatar
Sr. Civil/Structural Design Engineer
October 2006 to Present **(4 Years)**
- : FAST CONTRACTING CO.
JEDDAH K.S.A.
Civil Design Engineer
Nov. 2004 – Aug. 2006 **(1 Year)**

- : FINE TECH ENGINEERING CONSULTANCY, NO. 29
DPS COMPOUND, BAGUIO CITY,
PHILIPPINES
Project Manager
Jan. 1998 – Nov. 2004 **(6 Years)**

- : ARC A+E CONSULTANTS
NO. 11 AGUILA STREET, DIZON SUBD. BAGUIO CITY,
PHILIPPINES
Design Consultants
Dec. 1999 – Dec. 2001**(2 Years)**

- : LAS CASAS SOCIAL HOUSING
PROJECTS, INC.
PHILIPPINES
Project Engineer
March 1996 – June 1997 **(1 Year)**

- : N. R. PAR & ASSOCIATES
BAGUIO CITY, PHILIPPINES
Sr. Construction Manager
Jun 1995 – Feb. 1996 **(1 Year)**

- : SAN LORENZO DEV'T. CORPORATION,
PHILIPPINES
Senior Site Engineer
April 1994 – June 1995 **(1 Year)**

- : PHILIPPINES PACIFIC OHSAKI CONSTRUCTION
CORP. PHILIPPINES
Asst. Project Manager
April 1992 – April 1994 **(2 Years)**

- : UNIVERSITY OF THE CORDILLERAS,
BAGUIO CITY, PHILIPPINES
Full/Part Time Faculty Member
June 1986 – Oct. 2004 **(18 Years)**

CONSULTANT FIRM : ALMANA DESIGN CONSULTANTS INTERNATIONAL

Name of Staff Member : RENGASAMY RAMALINGAM

Current Position, Title and Responsibility : Sr. Mechanical Design Engineer

Design development and implementation of Mechanical (HVAC, Plumbing and Drainage, Fire Protection System, etc.) services. Design proposal to the Clients and Authorities, design presentation, coordination with Authorities, Architects and C&S Engineers, tender drawings and specification preparation, implementation of projects, attending progress and coordination meetings, reviewing submittals of the contractors, etc.

Proposed Position on the Project : Sr. Building Services Engineer

Nationality : Indian

Date of Birth : June 5, 1967

Academic Qualifications

Name/Location of Institution : Madras University / Chennai India

Academic Degrees with Dates : Bachelor Engineering Mechanical – 1998

Professional Affiliations : UPDA – Grade A Engineer (Qatar)

Project Responsibilities : Senior Design Engineer for Mechanical Services

Experience Relevant to this Project : Avionics Workshop, MT Complex and related buildings (Brunei)

: LAD and GSE Workshop and related buildings – 3rd Battalion (Brunei)

: Ammunition Bunkers and Integrated Weapons Complex (Brunei)

: General Cleaning Project for Municipality (Qatar)

Employment Record

- : ALMANA DESIGN CONSULTANTS INTERNATIONAL
Doha, Qatar
Senior Mechanical Design Engineer
May 2007 – Present **(3 Years)**

- : REGIONAL CONSULTANTS
Senior Mechanical & Electrical Engineer
March 2006 – March 2007 **(1 Year)**

- : PETAR PERUNG SDN. BHD. BRUNEI
Senior Mechanical & Electrical Engineer
April 2003 – February 2006 **(3 Years)**

- : SEC MASHIBA SDN. BHD.
Project Engineer
June 28, 1996 – March 15, 2003 **(7 Years)**

- : KAUVERI ENGINEERING INDUSTRIES LTD. TRICHY,
INDIA
Project Engineer
January 1994 – March 1996 **(2 Years)**

- : N.T. ENGINEERING PVT. LTD.
Production Engineer
March 1991 – December 1993 **(2 Years)**

- : ANNAI ENGINEERING INDUSTRIES
Production Supervisor
January 1989 – February 1991 **(2 Years)**